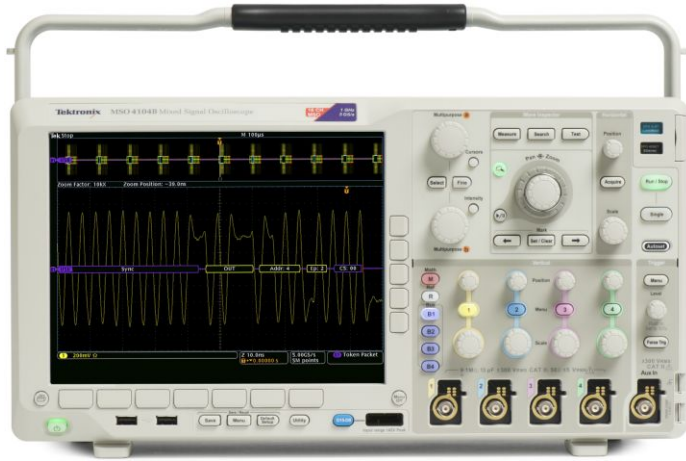


# Mixed Signal Oscilloscopes

## MSO4000B, DPO4000B Series Datasheet



With the MSO/DPO4000B Mixed Signal Oscilloscope Series, you can analyze up to 20 analog and digital signals with a single instrument to quickly find and diagnose problems in complex designs. Bandwidths up to 1 GHz and up to 5X oversampling on all channels ensure you have the performance you need to see fast-changing signal details. To capture long windows of signal activity while maintaining fine timing resolution, the MSO/DPO4000B Series offers deep record length of up to 20M points standard on all channels. And with Wave Inspector® controls for rapid waveform navigation, automated serial and parallel bus analysis, limit and mask testing, and automated power analysis – your Tektronix oscilloscope provides the feature-rich tools you need to simplify and speed debug of your complex design.

### Key performance specifications

- 1 GHz, 500 MHz, 350 MHz, and 100 MHz bandwidth models
- 2 and 4 analog channel models
- Up to 5 GS/s sample rate on all channels
- Up to 20 M record length on all channels
- >340,000 wfm/s maximum waveform capture rate
- Standard passive voltage probes with 3.9 pF capacitive loading and 500 MHz or 1 GHz analog bandwidth
- Suite of advanced triggers

### Key features

- Wave Inspector® controls provide easy navigation and automated search of waveform data
- 42 automated measurements, and FFT analysis for simplified waveform analysis
- 16 digital channels (MSO series)
- Mixed signal design and analysis (MSO series)
  - Automated triggering, decode, and search on parallel buses
  - Per-channel threshold settings
  - Multichannel setup and hold triggering
  - MagniVu™ High-speed acquisition provides 60.6 ps fine timing resolution on digital channels
- Optional serial triggering and analysis - automated serial triggering, decode, and search options for I<sup>2</sup>C, SPI, USB, Ethernet, CAN, LIN, FlexRay, RS-232/422/485/UART, MIL-STD-1553, and I<sup>2</sup>S/LJ/RJ/TDM
- TekVPI® probe interface supports active, differential, and current probes for automatic scaling and units
- 10.4 in. (264 mm) bright XGA color display
- Small footprint and lightweight – Only 5.8 in. (147 mm) deep and 11 lb. (5 kg)

### Connectivity

- Two USB 2.0 host ports on the front panel and two on the rear panel for quick and easy data storage and connecting a USB keyboard
- USB 2.0 device port on the rear panel for easy connection to a PC or direct printing to a PictBridge®-compatible printer
- Integrated 10/100/1000BASE-T Ethernet port for network connection and video out port to export the oscilloscope display to a monitor or projector

### Optional application support

- Power analysis
- Limit and mask testing
- HDTV and custom video analysis

## Need more performance?

Looking for an MSO at 100 MHz, 350 MHz, 500 MHz or 1 GHz?

Need an integrated spectrum analyzer?

Need to analyze analog, digital, and RF simultaneously?

Consider the MDO4000B Series oscilloscopes, the world's first Mixed Domain Oscilloscope. [www.tektronix.com/MDO4000](http://www.tektronix.com/MDO4000)



- Includes a 16 channel MSO
- 3 GHz and 6 GHz integrated spectrum analyzers
- Simultaneous, time-correlated acquisition of analog, digital and RF
- 20 M record length

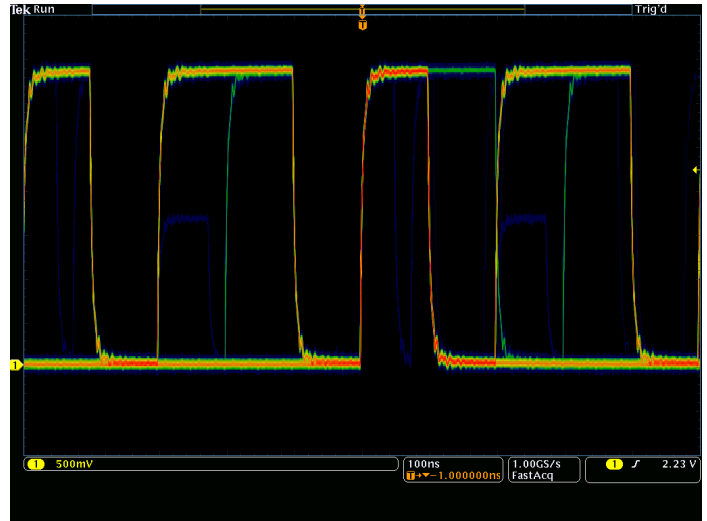
## Comprehensive features speed every stage of debug

These oscilloscopes offer a robust set of features to speed every stage of debugging your design – from quickly discovering an anomaly and capturing it, to searching your waveform record for the event and analyzing its characteristics and your device's behavior.

### Discover

To debug a design problem, first you must know it exists. Every design engineer spends time looking for problems in their design, a time-consuming and frustrating task without the right debug tools.

The industry's most complete visualization of signals provides fast insight into the real operation of your device. A fast waveform capture rate – greater than 340,000 waveforms per second with FastAcq™ – enables you to see glitches and other infrequent transients within seconds, revealing the true nature of device faults. A digital phosphor display with color- and intensity-grading shows the history of a signal's activity by using color or intensity in areas of the signal that occur more frequently, providing a visual display of just how often anomalies occur.



Discover – Digital phosphor technology with FastAcq enables greater than 340,000 wfms/s waveform capture rate and real-time color-intensity grading.

### Capture

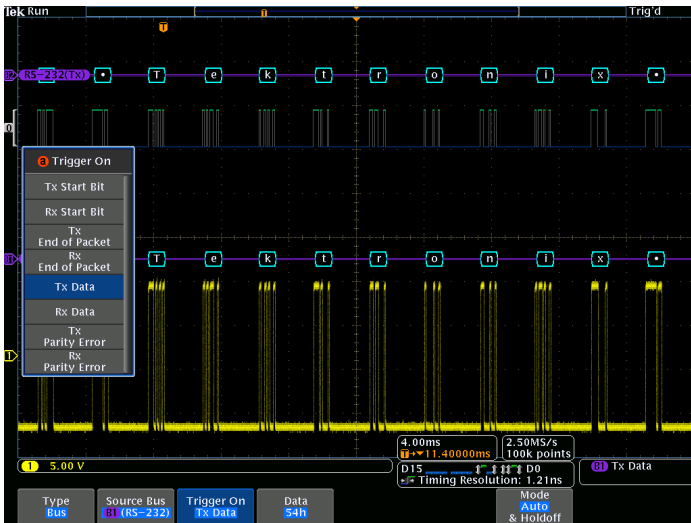
Discovering a device fault is only the first step. Next, you must capture the event of interest to identify root cause.

Accurately capturing any signal of interest begins with proper probing. Low-capacitance probes are included with the oscilloscope, one for each analog channel. These industry-first high-impedance passive voltage probes have less than 4 pF of capacitive loading to minimize the effect of the probe on your circuit's operation, offering the performance of an active probe with the flexibility of a passive probe.

A complete set of triggers - including runt, timeout, logic, pulse width/glitch, setup/hold violation, serial packet, and parallel data - help you quickly find your event. With up to a 20M point record length, you can capture many events of interest, even thousands of serial packets, in a single acquisition for further analysis while maintaining high resolution to zoom in on fine signal details.

From triggering on specific packet content to automatic decode in multiple data formats, the oscilloscope provides integrated support for the industry's broadest range of serial buses - I<sup>2</sup>C, SPI, USB, Ethernet, CAN, LIN, FlexRay, RS-232/422/485/UART, MIL-STD-1553, and I<sup>2</sup>S/LJ/RJ/TDM. The ability to decode up to four serial and/or parallel buses simultaneously means you gain insight into system-level problems quickly.

To further help troubleshoot system-level interactions in complex embedded systems, the oscilloscope offers 16 digital channels in addition to its analog channels. Since the digital channels are fully integrated into the oscilloscope, you can trigger across all input channels, automatically time correlating all analog, digital, and serial signals. The MagniVu™ high-speed acquisition on these channels enables you to acquire fine signal detail (up to 60.6 ps resolution) around the trigger point for precision timing measurements. MagniVu is essential for making accurate timing measurements for setup and hold, clock delay, signal skew, and glitch characterization.

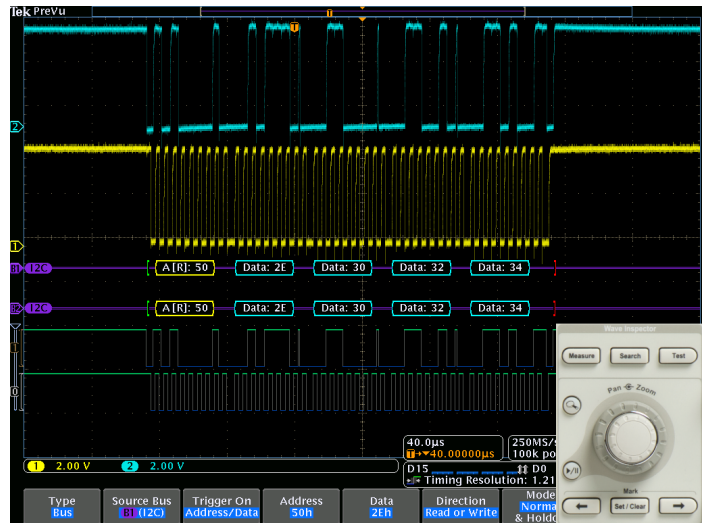


Capture - Triggering on a specific transmit data packet going across an RS-232 bus. A complete set of triggers, including triggers for specific serial packet content, ensures you quickly capture your event of interest.

### Search

Finding your event of interest in a long waveform record can be time consuming without the right search tools. With today's record lengths pushing beyond a million data points, locating your event can mean scrolling through thousands of screens of signal activity.

The innovative Wave Inspector® controls give you the industry's most comprehensive search and waveform navigation capability. These controls speed panning and zooming through your record. With a unique force-feedback system, you can move from one end of your record to the other in just seconds. User marks allow you to mark any location that you may want to reference later for further investigation. Or, automatically search your record for criteria you define. Wave Inspector will instantly search your entire record, including analog, digital, and serial bus data. Along the way it will automatically mark every occurrence of your defined event so you can quickly move between events.

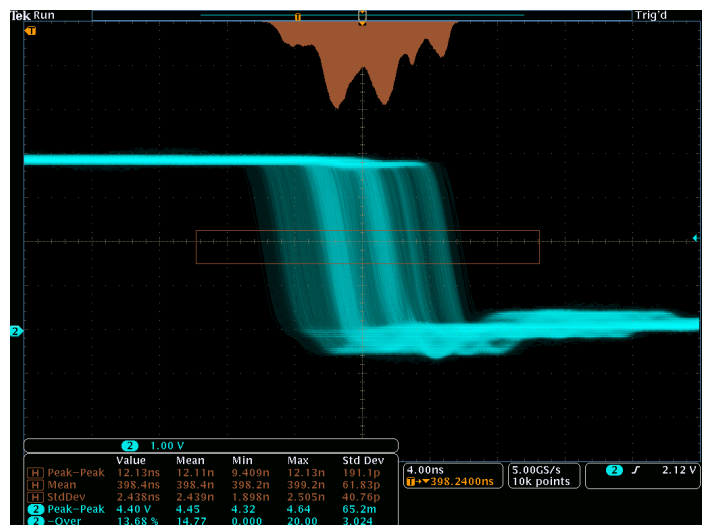


Search – I<sup>2</sup>C decode showing results from a Wave Inspector search for Address value 50. Wave Inspector controls provide unprecedented efficiency in viewing and navigating waveform data.

### Analyze

Verifying that your prototype's performance matches simulations and meets the project's design goals requires analyzing its behavior. Tasks can range from simple checks of rise times and pulse widths to sophisticated power loss analysis and investigation of noise sources.

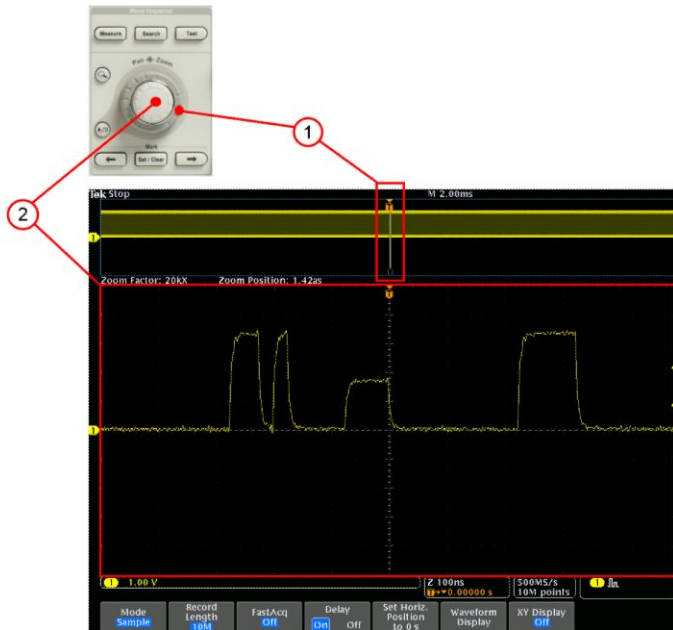
The oscilloscope offers a comprehensive set of integrated analysis tools including waveform- and screen-based cursors, automated measurements, advanced waveform math including arbitrary equation editing, FFT analysis, and trend plots for visually determining how a measurement is changing over time. Specialized application support for serial bus analysis, power supply design, and video design and development is also available.



Analyze – Waveform histogram of a falling edge showing the distribution of edge position (jitter) over time. Included are numeric measurements made on the waveform histogram data. A comprehensive set of integrated analysis tools speeds verification of your design's performance.

## Wave Inspector® navigation and search

With long record lengths, a single acquisition can include thousands of screens of waveform data. Wave Inspector®, the industry's best tool for navigation and search, enables you to find events of interest in seconds.



Wave Inspector controls provide unprecedented efficiency in viewing, navigating, and analyzing waveform data. Zip through your long record by turning the outer pan control (1). Get details from the beginning to end in seconds. See something of interest and want to see more details? Just turn the inner zoom control (2).

### Zoom and pan

A dedicated, two-tier front-panel control provides intuitive control of both zooming and panning. The inner control adjusts the zoom factor (or zoom scale); turning it clockwise activates zoom and goes to progressively higher zoom factors, while turning it counterclockwise results in lower zoom factors and eventually turning zoom off. No longer do you need to navigate through multiple menus to adjust your zoom view. The outer control pans the zoom box across the waveform to quickly get to the portion of waveform you are interested in. The outer control also utilizes force-feedback to determine how fast to pan on the waveform. The farther you turn the outer control, the faster the zoom box moves. Pan direction is changed by simply turning the control the other way.

### Play/Pause

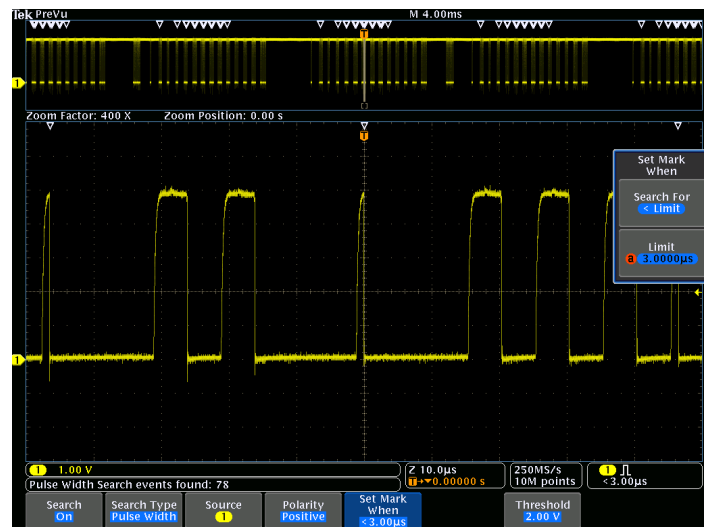
A dedicated **Play/Pause** front-panel button scrolls the waveform across the display automatically while you look for anomalies or an event of interest. Playback speed and direction are controlled using the intuitive pan control. Once again, turning the control further makes the waveform scroll faster and changing direction is as simple as turning the control the other way.

## User marks

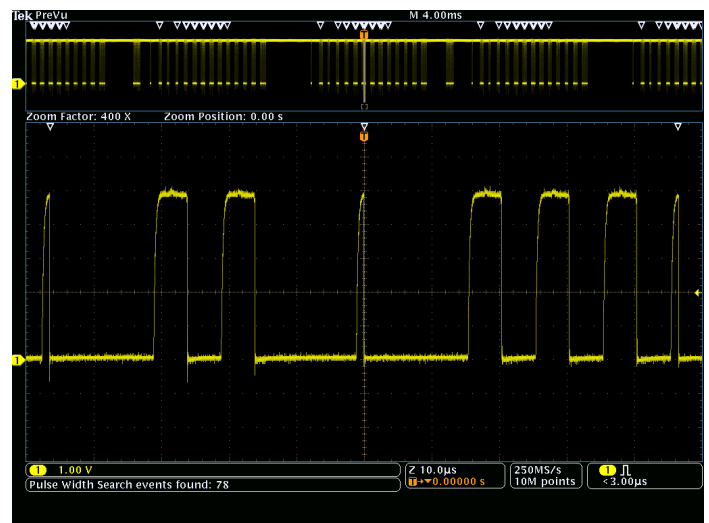
Press the **Set Mark** front-panel button to place one or more marks on the waveform. Navigating between marks is as simple as pressing the **Previous** (←) and **Next** (→) buttons on the front panel.

## Search marks

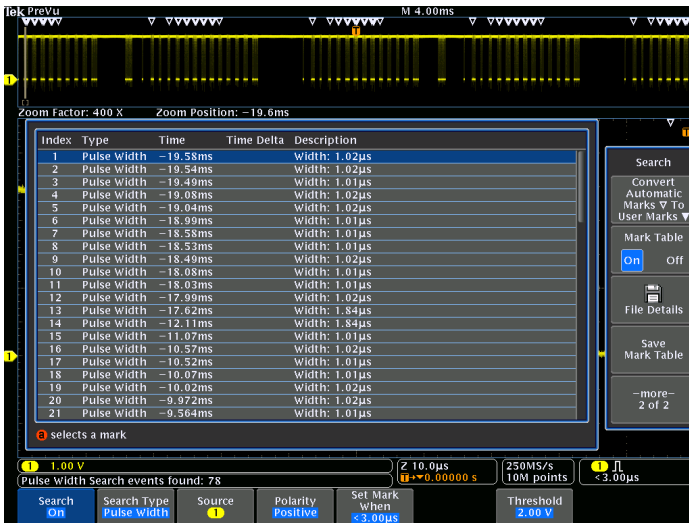
The **Search** button allows you to automatically search through your long acquisition looking for user-defined events. All occurrences of the event are highlighted with search marks and are easily navigated to, using the front-panel **Previous** (←) and **Next** (→) buttons. Search types include edge, pulse width/glitch, timeout, runt, logic, setup and hold, rise/fall time, parallel bus, and I<sup>2</sup>C, SPI, USB, Ethernet, CAN, LIN, FlexRay, RS-232/422/485/UART, MIL-STD-1553, and I<sup>2</sup>S/LJ/RJ/TDM packet content. A search mark table provides a tabular view of the events found during the automated search. Each event is shown with a time stamp, making timing measurements between events easy.



Search step 1: You define what you would like to find.



Search step 2: Wave Inspector automatically searches through the record and marks each event with a hollow white triangle. You can then use the Previous and Next buttons to jump from one event to the next.



Search step 3: The Search Mark table provides a tabular view of each of the events found by the automated search. Each event is shown with a time stamp making timing measurements between events easy.

## Digital phosphor technology with FastAcq™

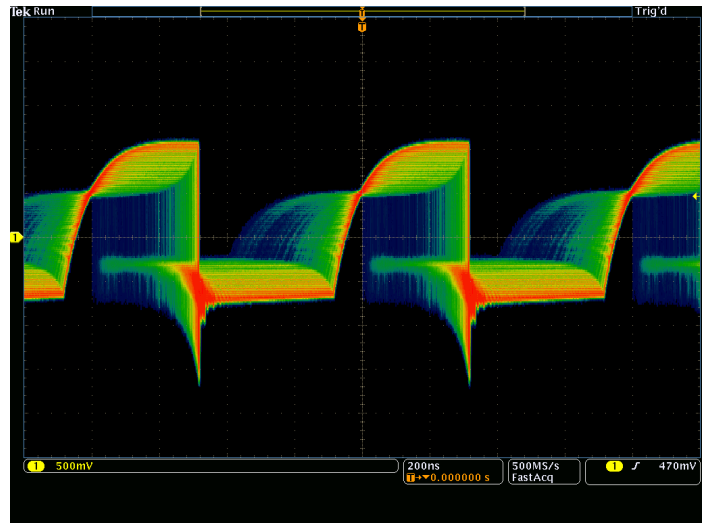
Digital phosphor technology with FastAcq provides you with fast insight into the real operation of your device. Its fast waveform capture rate – greater than 340,000 wfms/s – gives you a high probability of quickly seeing the infrequent problems common in digital systems: runt pulses, glitches, timing issues, and more.

To further enhance the visibility of rarely occurring events, intensity grading is used to indicate how often rare transients are occurring relative to normal signal characteristics. There are four waveform palettes available in FastAcq acquisition mode.

- The *Temperature palette* uses color-grading to indicate frequency of occurrence with hot colors like red/yellow indicating frequently occurring events and colder colors like blue/green indicating rarely occurring events.
- The *Spectral palette* uses color-grading to indicate frequency of occurrence with colder colors like blue indicating frequently occurring events and hot colors like red indicating rarely occurring events.
- The *Normal palette* uses the default channel color (like yellow for channel one) along with gray-scale to indicate frequency of occurrence where frequently occurring events are bright.
- The *Inverted palette* uses the default channel color along with gray-scale to indicate frequency of occurrence where rarely occurring events are bright.

These color palettes quickly highlight the events that over time occur more often or, in the case of infrequent anomalies, occur less often.

Infinite or variable persistence choices determine how long waveforms stay on the display, helping you to determine how often an anomaly is occurring.



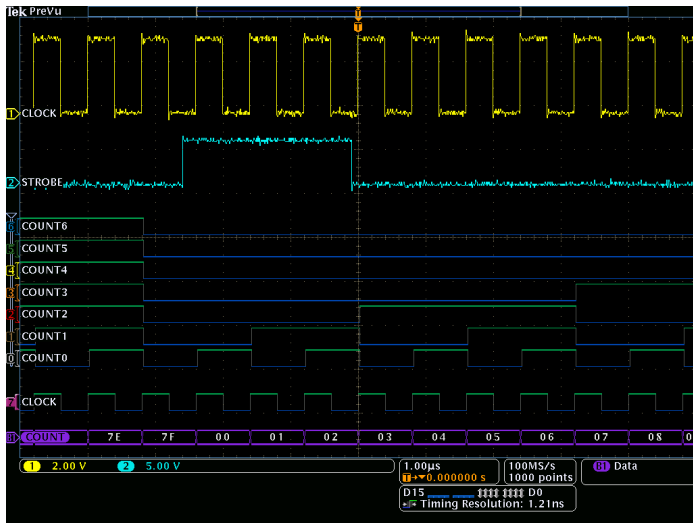
Digital phosphor technology enables a greater than 340,000 wfms/s waveform capture rate and real-time intensity grading.

## Accurate high-speed probing

The TPP Series probes, included standard with every MSO/DPO4000B Series oscilloscope, provide up to 1 GHz of analog bandwidth, and 3.9 pF of capacitive loading. The extremely low capacitive loading minimizes adverse effects on your circuits and is more forgiving of longer ground leads. And, since the probe bandwidth matches or exceeds your oscilloscope bandwidth, you can see the high-frequency components in your signal which is critical for high-speed applications. The TPP Series passive voltage probes offer all the benefits of general-purpose probes like high dynamic range, flexible connection options, and robust mechanical design, while providing the performance of active probes. In addition, a low-attenuation, 2X version of the TPP probes is available for measuring low voltages. Unlike other low-attenuation passive probes, the TPP0502 has high bandwidth (500 MHz) as well as low capacitive loading (12.7 pF).

## Mixed signal design and analysis (MSO Series)

The MSO models provide 16 digital channels which are tightly integrated into the oscilloscope's user interface. This simplifies operation and makes it possible to solve mixed-signal issues easily.



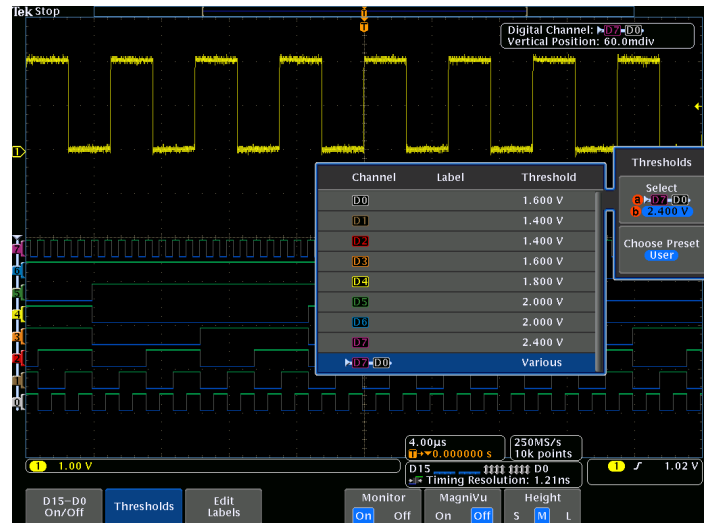
The MSO Series provide 16 integrated digital channels enabling you to view and analyze time-correlated analog and digital signals.

### Color-coded digital waveform display

This oscilloscope has redefined the way you view digital waveforms. One common problem shared by both logic analyzers and mixed-signal oscilloscopes is determining if data is a one or a zero when zoomed in far enough that the digital trace stays flat all the way across the display. Color-coded digital traces display ones in green and zeros in blue.

The multiple transition detection hardware shows you a white edge on the display when the system detects multiple transitions. White edges indicate that more information is available by zooming in or acquiring at faster sampling rates. In most cases zooming in will reveal the pulse that was not viewable with the previous settings. If the white edge is still present after zooming in as far as possible, this indicates that increasing the sample rate on the next acquisition will reveal higher frequency information than the previous settings could acquire.

You can group digital waveforms and enter waveform labels by using a USB keyboard. By simply placing digital waveforms next to each other, they form a group.



With color-coded digital waveform display, groups are created by simply placing digital channels together on the screen, allowing digital channels to be moved as a group. You can set threshold values for each channel, enabling support for up to 16 different logic families.

Once a group is formed, you can position all the channels contained in that group collectively. This greatly reduces the normal setup time associated with positioning channels individually.

### MagniVu® high-speed acquisition

The main digital acquisition mode on the MSO4000B Series will capture up to 20M points at 500 MS/s (2 ns resolution). In addition to the main record, the oscilloscope provides an ultra high-resolution record called MagniVu which acquires 10,000 points at up to 16.5 GS/s (60.6 ps resolution). Both main and MagniVu waveforms are acquired on every trigger and can be switched between in the display at any time, running or stopped. MagniVu provides significantly finer timing resolution than comparable MSOs on the market, instilling confidence when making critical timing measurements on digital waveforms.



The MagniVu high-resolution record provides 60.6 ps timing resolution, enabling you to make critical timing measurements on your digital waveforms.

## P6616 MSO probe

This unique probe design offers two eight-channel pods. Each channel ends with a probe tip featuring a recessed ground for simplified connection to the device under test. The coax on the first channel of each pod is colored blue making it easy to identify. The common ground uses an automotive-style connector making it easy to create custom grounds for connecting to the device under test. When connecting to square pins, the P6616 has an adapter that attaches to the probe head extending the probe ground flush with the probe tip so you can attach to a header. The P6616 offers outstanding electrical characteristics, having only 3 pF of capacitive loading, a 100 k $\Omega$  input resistance, and is capable of acquiring toggle rates >500 MHz and pulses as short as 1 ns in duration.



The P6616 MSO probe offers two eight-channel pods to simplify connecting to your device.

## Serial triggering and analysis (optional)

On a serial bus, a single signal often includes address, control, data, and clock information. This can make isolating events of interest difficult. Automatic trigger, decode, and search on bus events and conditions gives you a robust set of tools for debugging serial buses. The optional serial protocol triggering and analysis functionality is offered free for a 30-day trial period. This free trial period starts automatically when the instrument is powered on for the first time.



Triggering on a specific OUT Token packet on a USB full-speed serial bus. The yellow waveform is the D+ and the blue waveform is the D-. A bus waveform provides decoded packet content including Start, Sync, PID, Address, End Point, CRC, Data values, and Stop.

## Serial triggering

Trigger on packet content such as start of packet, specific addresses, specific data content, unique identifiers, etc. on popular serial interfaces such as I<sup>2</sup>C, SPI, USB, Ethernet, CAN, LIN, FlexRay, RS-232/422/485/UART, MIL-STD-1553, and I<sup>2</sup>S/LJ/RJ/TDM.

## Bus display

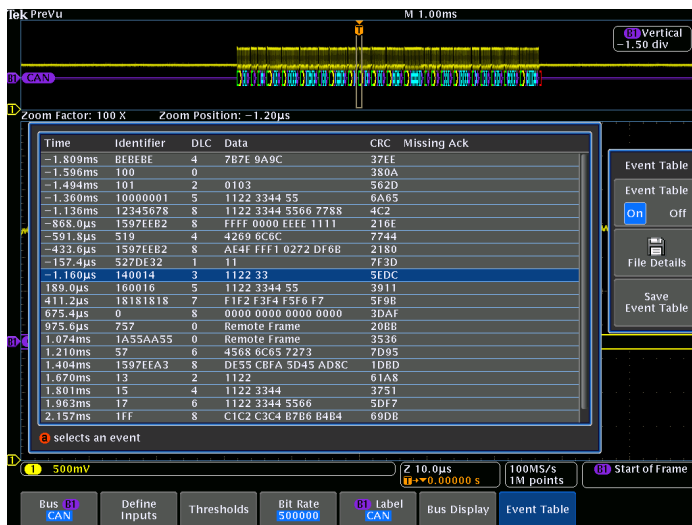
Provides a higher-level, combined view of the individual signals (clock, data, chip enable, etc.) that make up your bus, making it easy to identify where packets begin and end and identifying sub-packet components such as address, data, identifier, CRC, etc.

## Bus decoding

Tired of having to visually inspect the waveform to count clocks, determine if each bit is a 1 or a 0, combine bits into bytes, and determine the hex value? Let the oscilloscope do it for you! Once you've set up a bus, the MSO/DPO4000B Series will decode each packet on the bus, and display the value in hex, binary, decimal (USB, Ethernet, MIL-STD-1553, LIN, and FlexRay only), signed decimal (I<sup>2</sup>S/LJ/RJ/TDM only), or ASCII (USB, Ethernet, and RS-232/422/485/UART only) in the bus waveform.

## Event table

In addition to seeing decoded packet data on the bus waveform itself, you can view all captured packets in a tabular view much like you would see in a software listing. Packets are time stamped and listed consecutively with columns for each component (Address, Data, etc.). You can save the event table data in .csv format.



Event table showing decoded identifier, DLC, DATA, and CRC for every CAN packet in a long acquisition.

Technology		Trigger, Decode, Search	Order product
Embedded	I <sup>2</sup> C	Yes	DPO4EMBD
	SPI	Yes	DPO4EMBD
Computer	RS232/422/485, UART	Yes	DPO4COMP
USB	USB LS, FS, HS	Yes	DPO4USB
Ethernet	10Base-T, 100Base-TX	Yes	DPO4ENET
Automotive	CAN	Yes	DPO4AUTO or DPO4AUTOMAX
	LIN	Yes	DPO4AUTO or DPO4AUTOMAX
	FlexRay	Yes	DPO4AUTOMAX
Military and Aerospace	MIL-STD-1553	Yes	DPO4AERO
Audio	I <sup>2</sup> S	Yes	DPO4AUDIO
	LJ, RJ	Yes	DPO4AUDIO
	TDM	Yes	DPO4AUDIO

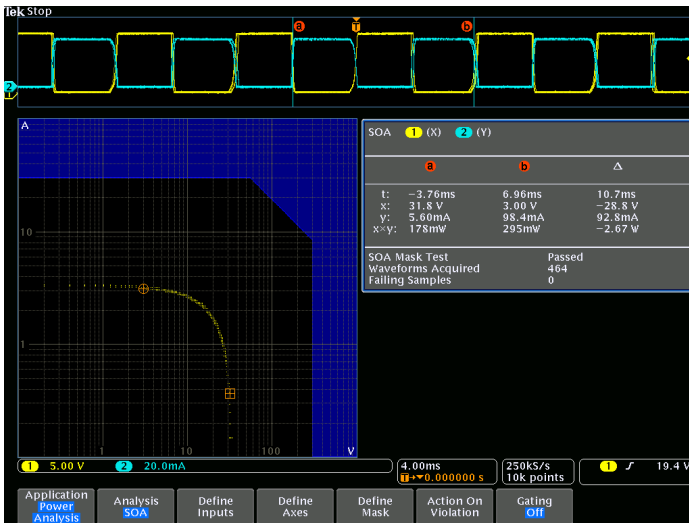
## Search (serial triggering)

Serial triggering is very useful for isolating the event of interest, but once you've captured it and need to analyze the surrounding data, what do you do? In the past, users had to manually scroll through the waveform counting and converting bits and looking for what caused the event. You can have the oscilloscope automatically search through the acquired data for user-defined criteria including serial packet content. Each occurrence is highlighted by a search mark. Rapid navigation between marks is as simple as pressing the **Previous** (←) and **Next** (→) buttons on the front panel.

## Power analysis (optional)

Ever increasing consumer demand for longer battery-life devices and for green solutions that consume less power require power-supply designers to characterize and minimize switching losses to improve efficiency. In addition, the supply's power levels, output purity, and harmonic feedback into the power line must be characterized to comply with national and regional power quality standards. Historically, making these and many other power measurements on an oscilloscope has been a long, manual, and tedious process. The optional power analysis tools greatly simplify these tasks, enabling quick and accurate analysis of power quality, switching loss, harmonics, safe operating area (SOA), modulation, ripple, and slew rate (di/dt, dv/dt). Completely integrated into the oscilloscope, the power analysis tools provide automated, repeatable power measurements with a touch of a button; no external PC or complex software setup is required. The optional power analysis functionality is offered free for a 30-day trial period. This free trial period starts automatically when the instrument is powered on for the first time.

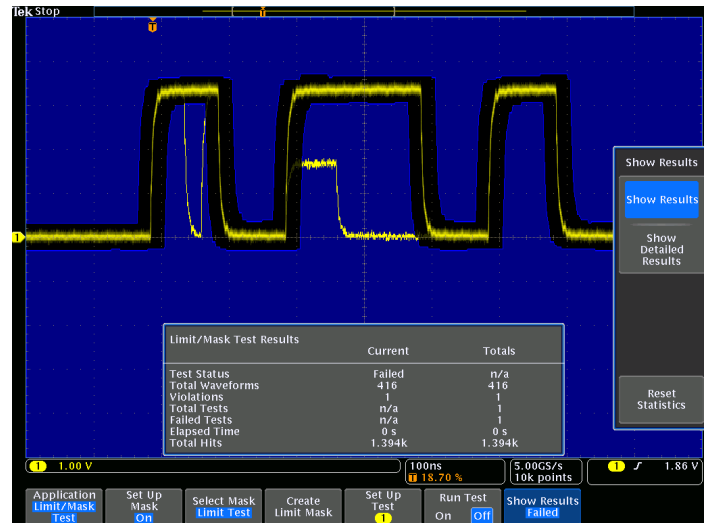




Safe operating area measurement. Automated power measurements enable quick and accurate analysis of common power parameters.

## Limit/Mask testing (optional)

A common task during the development process is characterizing the behavior of certain signals in a system. One method, called limit testing, is to compare a tested signal to a known good or "golden" version of the same signal with user-defined vertical and horizontal tolerances. Another common method, called mask testing, is to compare a tested signal to a mask, looking for where a signal under test violates the mask. The MSO/DPO4000B Series offers both limit and mask testing capability useful for long-term signal monitoring, characterizing signals during design, or testing on a production line. A robust set of telecommunications and computer standards are provided to test for compliance to a standard. Additionally, custom masks can be created and used for characterizing signals. Tailor a test to your specific requirements by defining test duration in number of waveforms or time, a violation threshold that must be met before considering a test a failure, counting hits along with statistical information, and actions upon violations, test failure, and test complete. Whether specifying a mask from a known good signal or from a custom or standard mask, conducting pass/fail tests in search of waveform anomalies such as glitches has never been easier. The optional limit/mask test functionality is offered free for a 30-day trial period. This free trial period starts automatically when the instrument is powered on for the first time.



Limit Test showing a mask created from a golden waveform and compared against a live signal. Results showing statistical information about the test are displayed.

## Video design and development

Many video engineers have remained loyal to analog oscilloscopes, believing the intensity gradations on an analog display are the only way to see certain video waveform details. The fast waveform capture rate, coupled with its intensity-graded view of the signal, provides the same information-rich display as an analog oscilloscope, but with much more detail and all the benefits of digital scopes.

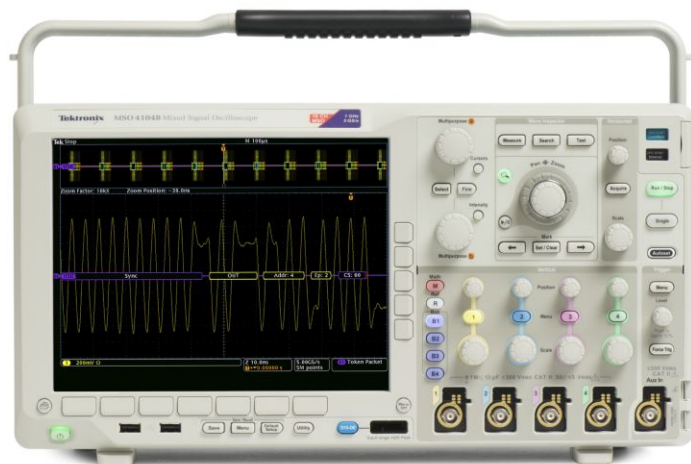
Standard features such as IRE and mV graticules, holdoff by fields, video polarity, and an Autoset smart enough to detect video signals, make these the easiest to use oscilloscopes on the market for video applications. And with high bandwidth and four analog inputs, the oscilloscope provides ample performance for analog and digital video use.

The video functionality is further extended with an optional video application module, which provides the industry's most complete suite of HDTV and custom (nonstandard) video triggers, as well as a video picture mode enabling you to see the picture of the video signal you are viewing - for NTSC and PAL signals. The optional video analysis functionality is offered free for a 30-day trial period. This free trial period starts automatically when the instrument is powered on for the first time.



Viewing an NTSC video image. Video picture mode contains automatic contrast and brightness settings as well as manual controls.

## Designed to make your work easier



The MSO/DPO4000B Series is designed to make your work easier. The large, high-resolution display shows intricate signal details. Dedicated front-panel controls simplify operation. Two USB host ports on the front panel allow you to easily transfer screen shots, instrument settings, and waveform data to a USB mass storage device.

## Large, high-resolution display

The MSO/DPO4000B Series features a 10.4 in. (264 mm) bright, LED backlit XGA color display for seeing intricate signal details.

## Connectivity

The MSO/DPO4000B contains a number of ports which can be used to connect the instrument to a network, directly to a PC, or other test equipment.

- Two USB host ports on the front and two USB host ports on the rear enable easy transfer of screen shots, instrument settings, and waveform data to a USB mass storage device. A USB keyboard can also be attached to a USB host port for data entry.
- Rear USB device port is useful for controlling the oscilloscope remotely from a PC or for printing directly to a PictBridge®-compatible printer.
- The standard 10/100/1000BASE-T Ethernet port on the rear of the instrument enables easy connection to networks, provides network and e-mail printing, and provides LXI Class-C compatibility. The instrument can also mount network drives for easy storage of screen images, setup files, or data files.
- A video out port on the rear of the instrument allows the display to be exported to an external monitor or projector.

## Compact form factor

With the compact, portable form factor, you can easily move the oscilloscope between labs. And with a depth of just 5.8 inches (147 mm), it saves you valuable space on your test bench.

## TekVPI® probe interface

The TekVPI probe interface sets the standard for ease of use in probing. In addition to the secure, reliable connection that the interface provides, TekVPI probes feature status indicators and controls, as well as a probe menu button right on the comp box itself. This button brings up a probe menu on the oscilloscope display with all relevant settings and controls for the probe. The TekVPI interface enables direct attachment of current probes without requiring a separate power supply. TekVPI probes can be controlled remotely through USB, GPIB, or LAN, enabling more versatile solutions in ATE environments. The instrument provides up to 50 W of power to the front panel TekVPI connectors from the internal power supply, giving you the confidence that it can meet any demanding probing requirements you have.

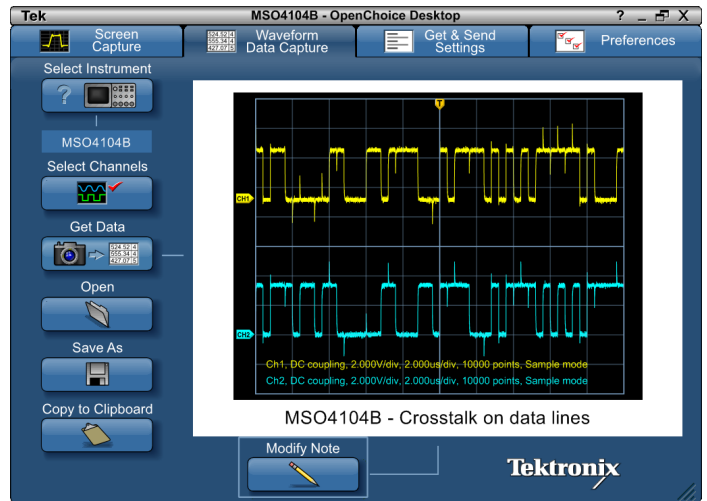


TekVPI probe interface simplifies connecting your probes to the oscilloscope.

### Remote connectivity and instrument control

Exporting data and measurements is as simple as connecting a USB cable from the oscilloscope to your PC. Key software applications – OpenChoice® Desktop, and Microsoft Excel and Word toolbars – are included standard with each oscilloscope to enable fast and easy direct communication with your Windows PC.

The included OpenChoice Desktop enables fast and easy communication between the oscilloscope and your PC through USB or LAN for transferring settings, waveforms, and screen images.



OpenChoice Desktop software enables seamless connection between the oscilloscope and your PC.

The embedded e\*Scope® capability enables fast control of the oscilloscope over a network connection through a standard web browser. Simply enter the IP address or network name of the oscilloscope and a web page will be served to the browser. Transfer and save settings, waveforms, measurements, and screen images or make live control changes to settings on the oscilloscope directly from the web browser.

The MSO/DPO4000B Series can also be connected to your network using the LAN port. The included LXI web interface provides information about the current configuration of your MSO/DPO4000B Series oscilloscope, including network configuration. You can make changes to the network configuration, control instrument settings, save screen images and instrument data, and save/load instrument setups of your oscilloscope directly from the web interface through a password-protected web page.

# Specifications

All specifications apply to all models unless noted otherwise.

## Model overview

	DPO4014B <sup>1</sup>	DPO4034B <sup>1</sup>	DPO4054B <sup>1</sup>	DPO4102B-L, MSO4102B-L	DPO4102B, MSO4102B	DPO4104B-L, MSO4104B-L	DPO4104B, MSO4104B <sup>1</sup>
Analog channels	4	4	4	2	2	4	4
Bandwidth	100 MHz	350 MHz	500 MHz	1 GHz	1 GHz	1 GHz	1 GHz
Rise time	3.5 ns	1 ns	700 ps	350 ps	350 ps	350 ps	350 ps
Sample rate (1 ch)	2.5 GS/s	2.5 GS/s	2.5 GS/s	5 GS/s	5 GS/s	5 GS/s	5 GS/s
Sample rate (2 ch)	2.5 GS/s	2.5 GS/s	2.5 GS/s	2.5 GS/s	5 GS/s	5 GS/s	5 GS/s
Sample rate (4 ch)	2.5 GS/s	2.5 GS/s	2.5 GS/s	—	—	2.5 GS/s	5 GS/s
Record length (1 ch)	20M	20M	20M	5M	20M	5M	20M
Record length (2 ch)	20M	20M	20M	5M	20M	5M	20M
Record length (4 ch)	20M	20M	20M	—	—	5M	20M
Duration at highest sample rate	8 ms	8 ms	8 ms	1 ms	4 ms	1 ms	4 ms
Digital channels	MSO models add 16 digital channels to the corresponding DPO model						

## Vertical system analog channels

### Hardware bandwidth limits

**≥350 MHz models** 20 MHz or 250 MHz

**100 MHz models** 20 MHz

### Input coupling

AC, DC

### Input impedance

1 MΩ ±1%, 50 Ω ±1%

### Input sensitivity range

**1 MΩ** 1 mV/div to 10 V/div

**50 Ω** 1 mV/div to 1 V/div

### Vertical resolution

8 bits (11 bits with Hi Res)

### Maximum input voltage

**1 MΩ** 300 V<sub>RMS</sub> CAT II with peaks ≤ ±425 V

**50 Ω** 5 V<sub>RMS</sub> with peaks ≤ ±20 V (DF ≤ 6.25%)

### DC gain accuracy

±1.5%, derated at 0.10%/°C above 30 °C

### Channel-to-channel isolation

Any two channels at equal vertical scale ≥100:1 at ≤100 MHz and ≥30:1 at >100 MHz up to the rated bandwidth

<sup>1</sup> Looking for the MSO4000B Series at 100 MHz, 350 MHz, 500 MHz or 1 GHz? You will find their replacements in the MDO4000B Series. These oscilloscopes have a built-in spectrum analyzer at no additional cost. Learn more about these products today, please visit [www.tektronix.com/mdo4000](http://www.tektronix.com/mdo4000).

**Vertical system analog channels**

Offset range	Volts/div setting	Offset range	
		1 M $\Omega$ input	50 $\Omega$
	1 mV/div to 50 mV/div	$\pm 1$ V	$\pm 1$ V
	50.5 mV/div to 99.5 mV/div	$\pm 0.5$ V	$\pm 0.5$ V
	100 mV/div to 500 mV/div	$\pm 10$ V	$\pm 10$ V
	505 mV/div to 995 mV/div	$\pm 5$ V	$\pm 5$ V
	1 V/div to 5 V/div	$\pm 100$ V	$\pm 5$ V
	5.05 V/div to 10 V/div	$\pm 50$ V	NA

**Vertical system digital channels**

Input channels	16 digital (D15 to D0)
Thresholds	Per-channel thresholds
Threshold selections	TTL, CMOS, ECL, PECL, User-defined
User-defined threshold range	$\pm 40$ V
Threshold accuracy	$\pm [100 \text{ mV} + 3\% \text{ of threshold setting}]$
Maximum input voltage	$\pm 42 V_{\text{peak}}$
Input dynamic range	30 $V_{\text{p-p}} \leq 200 \text{ MHz}$ 10 $V_{\text{p-p}} > 200 \text{ MHz}$
Minimum voltage swing	400 mV
Probe loading	100 k $\Omega$ in parallel with 3 pF
Vertical resolution	1 bit

**Horizontal system analog channels**

Time base range	
1 GHz models	400 ps to 1000 s
$\leq 500 \text{ MHz}$ models	1 ns to 1000 s
Time-base delay time range	-10 divisions to 5000 s
Channel-to-channel deskew range	$\pm 125$ ns
Time base accuracy	$\pm 5$ ppm over any $\geq 1$ ms interval

## Horizontal system digital channels

Maximum sample rate (Main)	500 MS/s (2 ns resolution)
Maximum record length (Main)	20M points (5M points on -L models)
Maximum sample rate (MagniVu)	16.5 GS/s (60.6 ps resolution)
Maximum record length (MagniVu)	10k points centered around the trigger
Minimum detectable pulse width (typical)	1 ns
Channel-to-channel skew (typical)	200 ps
Maximum input toggle rate	500 MHz (Maximum frequency sine wave that can accurately be reproduced as a logic square wave. Requires the use of a short ground extender on each channel. This is the maximum frequency at the minimum swing amplitude. Higher toggle rates can be achieved with higher amplitudes.)

## Trigger system

Trigger modes	Auto, Normal, and Single								
Trigger coupling	DC, AC, HF reject (attenuates >50 kHz), LF reject (attenuates <50 kHz), noise reject (reduces sensitivity)								
Trigger holdoff range	20 ns to 8 s								
Trigger sensitivity									
Internal DC coupled	<table border="1"> <thead> <tr> <th>Trigger source</th> <th>Sensitivity</th> </tr> </thead> <tbody> <tr> <td>1 M<math>\Omega</math> path (all models)</td> <td>For 1 mV/div to 4.98 mV/div; 0.75 div from DC to 50 MHz, increasing to 1.3 div at rated bandwidth</td> </tr> <tr> <td>50 <math>\Omega</math> path (<math>\leq</math>500 MHz models)</td> <td>For <math>\geq</math>5 mV/div; 0.4 div from DC to 50 MHz, increasing to 1 div at rated bandwidth</td> </tr> <tr> <td>50 <math>\Omega</math> path (1 GHz models)</td> <td>0.4 div from DC to 50 MHz, increasing to 1 div at rated bandwidth</td> </tr> </tbody> </table>	Trigger source	Sensitivity	1 M $\Omega$ path (all models)	For 1 mV/div to 4.98 mV/div; 0.75 div from DC to 50 MHz, increasing to 1.3 div at rated bandwidth	50 $\Omega$ path ( $\leq$ 500 MHz models)	For $\geq$ 5 mV/div; 0.4 div from DC to 50 MHz, increasing to 1 div at rated bandwidth	50 $\Omega$ path (1 GHz models)	0.4 div from DC to 50 MHz, increasing to 1 div at rated bandwidth
Trigger source	Sensitivity								
1 M $\Omega$ path (all models)	For 1 mV/div to 4.98 mV/div; 0.75 div from DC to 50 MHz, increasing to 1.3 div at rated bandwidth								
50 $\Omega$ path ( $\leq$ 500 MHz models)	For $\geq$ 5 mV/div; 0.4 div from DC to 50 MHz, increasing to 1 div at rated bandwidth								
50 $\Omega$ path (1 GHz models)	0.4 div from DC to 50 MHz, increasing to 1 div at rated bandwidth								
External	<table border="1"> <thead> <tr> <th>Trigger source</th> <th>Sensitivity</th> </tr> </thead> <tbody> <tr> <td>Auxiliary Input</td> <td>200 mV from DC to 50 MHz, increasing to 500 mV at rated bandwidth</td> </tr> </tbody> </table>	Trigger source	Sensitivity	Auxiliary Input	200 mV from DC to 50 MHz, increasing to 500 mV at rated bandwidth				
Trigger source	Sensitivity								
Auxiliary Input	200 mV from DC to 50 MHz, increasing to 500 mV at rated bandwidth								

Trigger level ranges	
Any input channel	$\pm$ 8 divisions from center of screen, $\pm$ 8 divisions from 0 V when vertical LF reject trigger coupling is selected
Aux Input (external trigger)	$\pm$ 8 V
Line	The line trigger level is fixed at about 50% of the line voltage.

Trigger frequency readout	Provides 6-digit frequency readout of triggerable events.
---------------------------	-----------------------------------------------------------

Trigger types	
Edge	Positive, negative, or either slope on any channel or front-panel auxiliary input. Coupling includes DC, AC, HF reject, LF reject, and noise reject.
Sequence (B-trigger)	Trigger Delay by Time: 4 ns to 8 s. Or Trigger Delay by Events: 1 to 4,000,000 events.
Pulse Width	Trigger on width of positive or negative pulses that are >, <, =, $\neq$ , or inside/outside a specified period of time.
Timeout	Trigger on an event which remains high, low, or either, for a specified time period (4 ns to 8 s).
Runt	Trigger on a pulse that crosses one threshold but fails to cross a second threshold before crossing the first again.

## Trigger system

<b>Logic</b>	Trigger when any logical pattern of channels goes false or stays true for specified period of time. Any input can be used as a clock to look for the pattern on a clock edge. Pattern (AND, OR, NAND, NOR) specified for all input channels defined as High, Low, or Don't Care.
<b>Setup and Hold</b>	Trigger on violations of both setup time and hold time between clock and data present on any of the analog and digital input channels.
<b>Rise/Fall Time</b>	Trigger on pulse edge rates that are faster or slower than specified. Slope may be positive, negative, or either.
<b>Video</b>	Trigger on all lines, odd, even, or all fields on NTSC, PAL, and SECAM video signals.
<b>Extended Video (optional)</b>	Trigger on 480p/60, 576p/50, 720p/30, 720p/50, 720p/60, 875i/60, 1080i/50, 1080i/60, 1080p/24, 1080p/24sF, 1080p/25, 1080p/30, 1080p/50, 1080p/60, and custom bi-level and tri-level sync video standards.
<b>I<sup>2</sup>C (optional)</b>	Trigger on Start, Repeated Start, Stop, Missing ACK, Address (7 or 10 bit), Data, or Address and Data on I <sup>2</sup> C buses up to 10 Mb/s.
<b>SPI (optional)</b>	Trigger on SS active, Start of Frame, MOSI, MISO, or MOSI and MISO on SPI buses up to 50.0 Mb/s.
<b>RS-232/422/485/UART (optional)</b>	Trigger on Tx Start Bit, Rx Start Bit, Tx End of Packet, Rx End of Packet, Tx Data, Rx Data, Tx Parity Error, and Rx Parity Error up to 10 Mb/s.
<b>USB: Low speed (optional)</b>	<p>Trigger on Sync Active, Start of Frame, Reset, Suspend, Resume, End of Packet, Token (Address) Packet, Data Packet, Handshake Packet, Special Packet, Error.</p> <p>Token packet trigger - Any token type, SOF, OUT, IN, SETUP; Address can be specified for Any Token, OUT, IN, and SETUP token types. Address can be further specified to trigger on <math>\leq</math>, <math>&lt;</math>, <math>=</math>, <math>&gt;</math>, <math>\geq</math>, <math>\neq</math> a particular value, or inside or outside of a range. Frame number can be specified for SOF token using binary, hex, unsigned decimal and don't care digits.</p> <p>Data packet trigger - Any data type, DATA0, DATA1; Data can be further specified to trigger on <math>\leq</math>, <math>&lt;</math>, <math>=</math>, <math>&gt;</math>, <math>\geq</math>, <math>\neq</math> a particular data value, or inside or outside of a range.</p> <p>Handshake packet trigger - Any handshake type, ACK, NAK, STALL.</p> <p>Special packet trigger - Any special type, Reserved</p> <p>Error trigger - PID Check, CRC5 or CRC16, Bit Stuffing.</p>
<b>USB: Full speed (optional)</b>	<p>Trigger on Sync, Reset, Suspend, Resume, End of Packet, Token (Address) Packet, Data Packet, Handshake Packet, Special Packet, Error.</p> <p>Token packet trigger - Any token type, SOF, OUT, IN, SETUP; Address can be specified for Any Token, OUT, IN, and SETUP token types. Address can be further specified to trigger on <math>\leq</math>, <math>&lt;</math>, <math>=</math>, <math>&gt;</math>, <math>\geq</math>, <math>\neq</math> a particular value, or inside or outside of a range. Frame number can be specified for SOF token using binary, hex, unsigned decimal and don't care digits.</p> <p>Data packet trigger - Any data type, DATA0, DATA1; Data can be further specified to trigger on <math>\leq</math>, <math>&lt;</math>, <math>=</math>, <math>&gt;</math>, <math>\geq</math>, <math>\neq</math> a particular data value, or inside or outside of a range.</p> <p>Handshake packet trigger - Any handshake type, ACK, NAK, STALL.</p> <p>Special packet trigger - Any special type, PRE, Reserved.</p> <p>Error trigger - PID Check, CRC5 or CRC16, Bit Stuffing.</p>

Trigger system

<b>USB: High speed (optional)<sup>2</sup></b>	<p>Trigger on Sync, Reset, Suspend, Resume, End of Packet, Token (Address) Packet, Data Packet, Handshake Packet, Special Packet, Error.</p> <p>Token packet trigger - Any token type, SOF, OUT, IN, SETUP; Address can be specified for Any Token, OUT, IN, and SETUP token types. Address can be further specified to trigger on <math>\leq</math>, <math>&lt;</math>, <math>=</math>, <math>&gt;</math>, <math>\geq</math>, <math>\neq</math> a particular value, or inside or outside of a range. Frame number can be specified for SOF token using binary, hex, unsigned decimal and don't care digits.</p> <p>Data packet trigger - Any data type, DATA0, DATA1, DATA2, MDATA; Data can be further specified to trigger on <math>\leq</math>, <math>&lt;</math>, <math>=</math>, <math>&gt;</math>, <math>\geq</math>, <math>\neq</math> a particular data value, or inside or outside of a range.</p> <p>Handshake packet trigger - Any handshake type, ACK, NAK, STALL, NYET.</p> <p>Special packet trigger - Any special type, ERR, SPLIT, PING, Reserved. SPLIT packet components that can be specified include:</p> <ul style="list-style-type: none"> <li>▪ Hub Address</li> <li>▪ Start/Complete - Don't Care, Start (SSPLIT), Complete (CSPLIT)</li> <li>▪ Port Address</li> <li>▪ Start and End bits - Don't Care, Control/Bulk/Interrupt (Full-speed Device, Low-speed Device), Isochronous (Data is Middle, Data is End, Data is Start, Data is All)</li> <li>▪ Endpoint Type - Don't Care, Control, Isochronous, Bulk, Interrupt</li> </ul> <p>Error trigger - PID Check, CRC5 or CRC16.</p>
<b>Ethernet (optional)<sup>3</sup></b>	<p>10BASE-T and 100BASE-TX: Trigger on Start Frame Delimiter, MAC Addresses, MAC Q-Tag Control Information, MAC Length/Type, IP Header, TCP Header, TCP/IPv4/MAC Client Data, End of Packet, and FCS (CRC) Error.</p> <p>100BASE-TX: Idle.</p> <p>MAC Addresses - Trigger on Source and Destination 48-bit address values.</p> <p>MAC Q-Tag Control Information - Trigger on Q-Tag 32-bit value.</p> <p>MAC Length/Type - Trigger on <math>\leq</math>, <math>&lt;</math>, <math>=</math>, <math>&gt;</math>, <math>\geq</math>, <math>\neq</math> a particular 16-bit value, or inside or outside of a range.</p> <p>IP Header - Trigger on IP Protocol 8-bit value, Source Address, Destination Address.</p> <p>TCP Header - Trigger on Source Port, Destination Port, Sequence Number, and Ack Number.</p> <p>TCP/IPv4/MAC Client Data - Trigger on <math>\leq</math>, <math>&lt;</math>, <math>=</math>, <math>&gt;</math>, <math>\geq</math>, <math>\neq</math> a particular data value, or inside or outside of a range. Selectable number of bytes to trigger on from 1-16. Byte offset options of Don't Care, 0-1499.</p>
<b>CAN (optional)</b>	<p>Trigger on Start of Frame, Frame Type (data, remote, error, overload), Identifier (standard or extended), Data, Identifier and Data, End of Frame, Missing ACK, or Bit Stuffing Error on CAN signals up to 1 Mb/s. Data can be further specified to trigger on <math>\leq</math>, <math>&lt;</math>, <math>=</math>, <math>&gt;</math>, <math>\geq</math>, or <math>\neq</math> a specific data value. User-adjustable sample point is set to 50% by default.</p>
<b>LIN (optional)</b>	<p>Trigger on Sync, Identifier, Data, Identifier and Data, Wakeup Frame, Sleep Frame, Errors such as Sync, Parity, or Checksum Errors up to 100 kb/s (by LIN definition, 20 kb/s).</p>
<b>FlexRay (optional)</b>	<p>Trigger on Start of Frame, Type of Frame (Normal, Payload, Null, Sync, Startup), Identifier, Cycle Count, Complete Header Field, Data, Identifier and Data, End of Frame or Errors such as Header CRC, Trailer CRC, Null Frame, Sync Frame, or Startup Frame Errors up to 100 Mb/s.</p>
<b>MIL-STD-1553 (optional)</b>	<p>Trigger on Sync, Word Type <sup>4</sup> (Command, Status, Data), Command Word (set RT Address, T/R, Sub-address/Mode, Data Word Count/Mode Code, and Parity individually), Status Word (set RT Address, Message Error, Instrumentation, Service Request Bit, Broadcast Command Received, Busy, Subsystem Flag, Dynamic Bus Control Acceptance (DBCA), Terminal Flag, and Parity individually), Data Word (user-specified 16-bit data value), Error (Sync, Parity, Manchester, Non-contiguous data), Idle Time (minimum time selectable from 2 <math>\mu</math>s to 100 <math>\mu</math>s; maximum time selectable from 2 <math>\mu</math>s to 100 <math>\mu</math>s; trigger on <math>&lt;</math> minimum, <math>&gt;</math> maximum, inside range, outside range). RT Address can be further specified to trigger on <math>=</math>, <math>\neq</math>, <math>&lt;</math>, <math>\leq</math>, <math>\geq</math> a particular value, or inside or outside of a range.</p>

<sup>2</sup> High-speed support only available on models with 1 GHz analog channel bandwidth.

<sup>3</sup>  $\geq$ 350 MHz bandwidth models are recommended for 100BASE-TX

<sup>4</sup> Trigger selection of Command Word will trigger on Command and ambiguous Command/Status words. Trigger selection of Status Word will trigger on Status and ambiguous Command/Status words.



## Trigger system

<b>I<sup>2</sup>S/LJ/RJ/TDM (optional)</b>	Trigger on Word Select, Frame Sync, or Data. Data can be further specified to trigger on $\leq$ , $<$ , $=$ , $>$ , $\geq$ , $\neq$ a specific data value, or inside or outside of a range. Maximum data rate for I <sup>2</sup> S/LJ/RJ is 12.5 Mb/s. Maximum data rate for TDM is 25 Mb/s.
<b>Parallel (available on MSO models only)</b>	Trigger on a parallel bus data value. Parallel bus can be from 1 to 16 bits (from the digital channels) plus 2 or 4 bits (from the analog channels) in size. Binary and Hex radices are supported.

## Acquisition system

### Acquisition Modes

<b>Sample</b>	Acquire sampled values.
<b>Peak Detect</b>	Captures glitches as narrow as 800 ps (1 GHz models) or 1.6 ns ( $\leq$ 500 MHz models) at all sweep speeds
<b>Averaging</b>	From 2 to 512 waveforms included in average.
<b>Envelope</b>	Min-max envelope reflecting Peak Detect data over multiple acquisitions.
<b>Hi Res</b>	Real-time boxcar averaging reduces random noise and increases vertical resolution.
<b>Roll</b>	Scrolls waveforms right to left across the screen at sweep speeds slower than or equal to 40 ms/div.
<b>FastAcq™</b>	FastAcq optimizes the instrument for analysis of dynamic signals and capture of infrequent events, capturing >340,000 wfms/s on 1 GHz models and >270,000 wfms/s on 100 MHz - 500 MHz models.

## Waveform measurements

<b>Cursors</b>	Waveform and Screen.
<b>Automatic measurements (time domain)</b>	30, of which up to eight can be displayed on-screen at any one time. Measurements include: Period, Frequency, Delay, Rise Time, Fall Time, Positive Duty Cycle, Negative Duty Cycle, Positive Pulse Width, Negative Pulse Width, Burst Width, Phase, Positive Overshoot, Negative Overshoot, Total Overshoot, Peak to Peak, Amplitude, High, Low, Max, Min, Mean, Cycle Mean, RMS, Cycle RMS, Positive Pulse Count, Negative Pulse Count, Rising Edge Count, Falling Edge Count, Area and Cycle Area.
<b>Measurement statistics</b>	Mean, Min, Max, Standard Deviation.
<b>Reference levels</b>	User-definable reference levels for automatic measurements can be specified in either percent or units.
<b>Gating</b>	Isolate the specific occurrence within an acquisition to take measurements on, using either the screen, or waveform cursors.
<b>Waveform histogram</b>	<p>A waveform histogram provides an array of data values representing the total number of hits inside of a user-defined region of the display. A waveform histogram is both a visual graph of the hit distribution as well as a numeric array of values that can be measured.</p> <p>Sources - Channel 1, Channel 2, Channel 3, Channel 4, Ref 1, Ref 2, Ref 3, Ref 4, Math</p> <p>Types - Vertical, Horizontal</p>
<b>Waveform histogram measurements</b>	Waveform Count, Hits in Box, Peak Hits, Median, Max, Min, Peak-to-Peak, Mean, Standard Deviation, Sigma 1, Sigma 2, Sigma 3

## Waveform math

<b>Arithmetic</b>	Add, subtract, multiply, and divide waveforms.
<b>Math functions</b>	Integrate, Differentiate, FFT.
<b>FFT</b>	Spectral magnitude. Set FFT Vertical Scale to Linear RMS or dBV RMS, and FFT Window to Rectangular, Hamming, Hanning, or Blackman-Harris.
<b>Advanced math</b>	Define extensive algebraic expressions including waveforms, reference waveforms, math functions (FFT, Intg, Diff, Log, Exp, Sqrt, Abs, Sine, Cosine, Tangent, Rad, Deg), scalars, up to two user-adjustable variables and results of parametric measurements (Period, Freq, Delay, Rise, Fall, PosWidth, NegWidth, BurstWidth, Phase, PosDutyCycle, NegDutyCycle, PosOverShoot, NegOverShoot, PeakPeak, Amplitude, RMS, CycleRMS, High, Low, Max, Min, Mean, CycleMean, Area, CycleArea, and trend plots), e.g., $(\text{Intg}(\text{Ch1} - \text{Mean}(\text{Ch1})) \times 1.414 \times \text{VAR1})$ .

## Act on Event

<b>Events</b>	None, when a trigger occurs, or when a defined number of acquisitions complete (1 to 1,000,000)
<b>Actions</b>	Stop acquisition, save waveform to file, save screen image, print, AUX OUT Pulse, remote interface SRQ, e-mail notification, and visual notification.
<b>Repeat</b>	Repeat the act on event process (1 to 1,000,000 and infinity)

## Video Picture Mode (optional)

<b>Sources</b>	Channel 1, Channel 2, Channel 3, Channel 4
<b>Video standards</b>	NTSC, PAL
<b>Contrast and brightness</b>	Manual and automatic
<b>Field selection</b>	Odd, Even, Interlaced
<b>Picture location on screen</b>	Selectable X and Y location, width and height adjustment, start line and pixel and line-to-line offset control.

## Power measurements (optional)

<b>Power Quality Measurements</b>	$V_{\text{RMS}}$ , $V_{\text{Crest Factor}}$ , Frequency, $I_{\text{RMS}}$ , $I_{\text{Crest Factor}}$ , True Power, Apparent Power, Reactive Power, Power Factor, Phase Angle.
<b>Switching loss measurements</b>	
<b>Power loss</b>	$T_{\text{on}}$ , $T_{\text{off}}$ , Conduction, Total.
<b>Energy loss</b>	$T_{\text{on}}$ , $T_{\text{off}}$ , Conduction, Total.
<b>Harmonics</b>	THD-F, THD-R, RMS measurements. Graphical and table displays of harmonics. Test to IEC61000-3-2 Class A and MIL-STD-1399, Section 300A.
<b>Ripple measurements</b>	$V_{\text{Ripple}}$ and $I_{\text{Ripple}}$ .
<b>Modulation Analysis</b>	Graphical display of +Pulse Width, -Pulse Width, Period, Frequency, +Duty Cycle, and -Duty Cycle modulation types.
<b>Safe operating area</b>	Graphical display and mask testing of switching device safe operating area measurements.
<b>dV/dt and dI/dt measurements</b>	Cursor measurements of slew rate.

**Limit/Mask testing (optional)**

<b>Included standard masks<sup>5</sup></b>	ITU-T, ANSI T1.102, USB
<b>Test source</b>	Limit test: Any Ch1 - Ch4 or any R1 - R4 Mask test: Any Ch1 - Ch4
<b>Mask creation</b>	Limit test vertical tolerance from 0 to 1 division in 1 m division increments; Limit test horizontal tolerance from 0 to 500 m division in 1 m division increments Load standard mask from internal memory Load custom mask from text file with up to 8 segments
<b>Mask scaling</b>	Lock to Source ON (mask automatically re-scales with source-channel settings changes) Lock to Source OFF (mask does not re-scale with source-channel settings changes)
<b>Test criteria run until</b>	Minimum number of waveforms (from 1 to 1,000,000; Infinity) Minimum elapsed time (from 1 second to 48 hours; Infinity)
<b>Violation threshold</b>	From 1 to 1,000,000
<b>Actions on test failure</b>	Stop acquisition, save screen image to file, save waveform to file, print screen image, trigger out pulse, set remote interface SRQ
<b>Actions on test complete</b>	Trigger out pulse, set remote interface SRQ
<b>Results display</b>	Test status, total waveforms, number of violations, violation rate, total tests, failed tests, test failure rate, elapsed time, total hits for each mask segment

**Software**

<b>OpenChoice® Desktop</b>	Enables fast and easy communication between a Windows PC and your oscilloscope using USB or LAN. Transfer and save settings, waveforms, measurements, and screen images. Included Word and Excel toolbars automate the transfer of acquisition data and screen images from the oscilloscope into Word and Excel for quick reporting or further analysis.
<b>IVI driver</b>	Provides a standard instrument programming interface for common applications such as LabVIEW, LabWindows/CVI, Microsoft .NET, and MATLAB.
<b>e*Scope® Web-based remote control</b>	Enables control of the oscilloscope over a network connection through a standard web browser. Simply enter the IP address or network name of the oscilloscope and a web page will be served to the browser. Transfer and save settings, waveforms, measurements, and screen images or make live control changes to settings on the oscilloscope directly from the web browser.
<b>LXI Class C Web interface</b>	Connect to the oscilloscope through a standard Web browser by simply entering the oscilloscope's IP address or network name in the address bar of the browser. The Web interface enables viewing of instrument status and configuration, status and modification of network settings, and instrument control through the e*Scope Web-based remote control. All Web interaction conforms to LXI Class C specification, version 1.3.

<sup>5</sup> ≥350 MHz bandwidth models are recommended for mask testing on telecomm standards >55 Mb/s. 1 GHz bandwidth models are recommended for mask testing on high-speed (HS) USB.

## Display system

<b>Display type</b>	10.4 in. (264 mm) liquid-crystal TFT color display
<b>Display resolution</b>	1,024 horizontal × 768 vertical pixels (XGA)
<b>Interpolation</b>	Sin(x)/x
<b>Waveform styles</b>	Vectors, Dots, Variable Persistence, Infinite Persistence.
<b>Graticules</b>	Full, Grid, Cross Hair, Frame, IRE and mV.
<b>Format</b>	YT and simultaneous XY/YT
<b>Maximum waveform capture rate</b>	>340,000 wfms/s in FastAcq acquisition mode on 1 GHz models >270,000 wfms/s in FastAcq acquisition mode on 100 MHz - 500 MHz models >50,000 wfms/s in DPO acquisition mode on all models.

## Input/output ports

<b>USB 2.0 high-speed host port</b>	Supports USB mass storage devices and keyboard. Two ports on front and two ports on rear of instrument.
<b>USB 2.0 device port</b>	Rear-panel connector allows for communication/control of oscilloscope through USBTMC or GPIB (with a TEK-USB-488), and direct printing to all PictBridge-compatible printers.
<b>Printing</b>	Print to network printer, PictBridge printer, or to a printer that supports e-mail printing. Note: This product includes software developed by the OpenSSL Project for use in the OpenSSL Toolkit. ( <a href="http://www.openssl.org/">http://www.openssl.org/</a> )
<b>LAN port</b>	RJ-45 connector, supports 10/100/1000 Mb/s
<b>Video out port</b>	DB-15 female connector, connect to show the oscilloscope display on an external monitor or projector. XGA resolution.
<b>Auxiliary input</b>	Front-panel BNC connector. Input Impedance 1 MΩ. Max input 300 V <sub>RMS</sub> CAT II with peaks ≤ ±425 V.
<b>Probe compensator output voltage and frequency</b>	Front-panel pins
<b>Amplitude</b>	0 to 2.5 V
<b>Frequency</b>	1 kHz
<b>Auxiliary out</b>	Rear-panel BNC connector  V <sub>OUT</sub> (Hi): ≥2.5 V open circuit, ≥1.0 V 50 Ω to ground V <sub>OUT</sub> (Lo): ≤0.7 V into a load of ≤4 mA; ≤0.25 V 50 Ω to ground  Output can be configured to provide a pulse out signal when the oscilloscope triggers, the internal oscilloscope reference clock out, or an event out for limit/mask testing.
<b>External reference input</b>	Time-base system can phase lock to an external 10 MHz reference (10 MHz ±1%)
<b>Kensington-style lock</b>	Rear-panel security slot connects to standard Kensington-style lock.
<b>VESA mount</b>	Standard (MIS-D 100) 100 mm VESA mounting points on rear of instrument.

**LAN eXtensions for Instrumentation (LXI)**

**Class** LXI Class C

**Version** V1.3

**Power source**

**Power source voltage** 100 to 240 V  $\pm 10\%$

**Power source frequency** 50 to 60 Hz  $\pm 10\%$  at 100 to 240 V  $\pm 10\%$   
400 Hz  $\pm 10\%$  at 115 V  $\pm 13\%$

**Power consumption** 225 W maximum

**Physical characteristics****Dimensions**

	mm	in.
Height	229	9.0
Width	439	17.3
Depth	147	5.8

**Weight**

	kg	lb.
Net	5	11
Shipping	10.7	23.6

**Rackmount configuration** 5U

**Cooling clearance** 2 in. (51 mm) required on left side and rear of instrument

**EMC, environment, and safety****Temperature**

**Operating** 0 °C to +50 °C (+32 °F to 122 °F)

**Nonoperating** -20 °C to +60 °C (-4 °F to 140 °F)

**Humidity**

**Operating** High: 40 °C to 50 °C, 10% to 60% relative humidity, Low: 0 °C to 40 °C, 10% to 90% relative humidity

**Nonoperating** High: 40 °C to 60 °C, 5% to 60% relative humidity, Low: 0 °C to 40 °C, 5% to 90% relative humidity

**Altitude**

**Operating** 3,000 meters (9,843 feet)

**Nonoperating** 9,144 meters (30,000 feet)

**Regulatory**

**Electromagnetic compatibility** EC Council Directive 2004/108/EC

**Safety** UL61010-1:2004, CAN/CSA-C22.2 No. 61010.1: 2004, Low Voltage Directive 2006/95/EC and EN61010-1:2001, IEC 61010-1:2001, ANSI 61010-1-2004, ISA 82.02.01

## Ordering information

### MSO/DPO4000B family<sup>6</sup>

DPO4014B	100 MHz, 2.5/2.5/2.5 GS/s on 1/2/4 channels, 20M record length, 4-channel digital phosphor oscilloscope
DPO4034B	350 MHz, 2.5/2.5/2.5 GS/s on 1/2/4 channels, 20M record length, 4-channel digital phosphor oscilloscope
DPO4054B	500 MHz, 2.5/2.5/2.5 GS/s on 1/2/4 channels, 20M record length, 4-channel digital phosphor oscilloscope
DPO4102B-L	1 GHz, 5/2.5 GS/s on 1/2 channels, 5M record length, 2-channel digital phosphor oscilloscope
DPO4102B	1 GHz, 5/5 GS/s on 1/2 channels, 20M record length, 2-channel digital phosphor oscilloscope
DPO4104B-L	1 GHz, 5/5/2.5 GS/s on 1/2/4 channels, 5M record length, 4-channel digital phosphor oscilloscope
DPO4104B	1 GHz, 5/5/5 GS/s on 1/2/4 channels, 20M record length, 4-channel digital phosphor oscilloscope
MSO4102B-L	1 GHz, 5/2.5 GS/s on 1/2 channels, 5M record length, 2+16 channel mixed signal oscilloscope
MSO4102B	1 GHz, 5/5 GS/s on 1/2 channels, 20M record length, 2+16 channel mixed signal oscilloscope
MSO4104B-L	1 GHz, 5/5/2.5 GS/s on 1/2/4 channels, 5M record length, 4+16 channel mixed signal oscilloscope
MSO4104B	1 GHz, 5/5/5 GS/s on 1/2/4 channels, 20M record length, 4+16 channel mixed signal oscilloscope

### Standard accessories

#### Probes

≤500 MHz models	TPP0500B, 500 MHz bandwidth, 10X, 3.9 pF. One passive voltage probe per analog channel.
1 GHz models	TPP1000, 1 GHz bandwidth, 10X, 3.9 pF. One passive voltage probe per analog channel.
MSO models also include	One P6616 16-channel logic probe and a logic probe accessory kit (020-2662-xx).

#### Accessories

200-5130-xx	Front cover
063-4300-xx	Documentation CD
016-2030-xx	Accessory bag
—	User manual
—	Power cord
—	OpenChoice® Desktop Software
—	NI LabVIEW SignalExpress™ Tektronix Edition Software
—	Calibration certificate documenting traceability to National Metrology Institute(s) and ISO9001 quality system registration

#### Warranty

Three-year warranty covering all parts and labor on the MSO4000B or DPO4000B instrument. One-year warranty covering parts and labor on included probes.

<sup>6</sup> Looking for the MSO4000B Series at 100 MHz, 350 MHz, 500 MHz or 1 GHz? You will find their replacements in the MDO4000B Series. These oscilloscopes have a built-in spectrum analyzer at no additional cost. Learn more about these products today, please visit [www.tektronix.com/mdo4000](http://www.tektronix.com/mdo4000).

## Application Modules

Application modules have licenses which can be transferred between an application module and an oscilloscope. The license may be contained in the module; allowing the module to be moved from one instrument to another. Or, the license can be contained in the oscilloscope; allowing the module to be removed and stored for safekeeping. Transferring the license to an oscilloscope and removing the module permits the use of more than 4 applications simultaneously.

<b>DPO4BND</b>	Application bundle module that enables all of the functionality of the DPO4AERO, DPO4AUDIO, DPO4AUTO, DPO4COMP, DPO4EMBD, DPO4ENET, DPO4LMT, DPO4PWR, DPO4USB and DPO4VID application modules in a single module. Save money when multiple serial bus debug and analysis application modules are required and easily move the entire set of functionality from one instrument to another.
<b>DPO4AERO</b>	Aerospace Serial Triggering and Analysis Module. Enables triggering on packet-level information on MIL-STD-1553 buses as well as analytical tools such as digital views of the signal, bus views, packet decoding, search tools, and packet decode tables with time-stamp information.  Signal Inputs - Any Ch1 - Ch4, Math, Ref1 - Ref4  Recommended Probing - Differential or single ended (only one single-ended signal required)
<b>DPO4AUDIO</b>	Audio Serial Triggering and Analysis Module. Enables triggering on packet-level information on I <sup>2</sup> S, LJ, RJ, and TDM audio buses as well as analytical tools such as digital views of the signal, bus views, packet decoding, search tools, and packet decode tables with time-stamp information. <sup>7</sup>  Signal Inputs - Any Ch1 - Ch4 (and any D0 - D15 on MSO models)  Recommended Probing - Single ended
<b>DPO4AUTO</b>	Automotive Serial Triggering and Analysis Module. Enables triggering on packet-level information on CAN and LIN buses as well as analytical tools such as digital views of the signal, bus views, packet decoding, search tools, and packet decode tables with time-stamp information.  Signal Inputs - LIN: Any Ch1 - Ch4 (and any D0 - D15 on MSO models); CAN: Any Ch1 - Ch4 (and any D0 - D15 on MSO models)  Recommended Probing - LIN: Single ended; CAN: Single ended or differential
<b>DPO4AUTOMAX</b>	Extended Automotive Serial Triggering and Analysis Module. Enables triggering on packet-level information on CAN, LIN, and FlexRay buses as well as analytical tools such as digital views of the signal, bus views, packet decoding, search tools, packet decode tables with time-stamp information, and eye diagram analysis software.  Signal Inputs - LIN: Any Ch1 - Ch4 (and any D0 - D15 on MSO models); CAN: Any Ch1 - Ch4 (and any D0 - D15 on MSO models); FlexRay: Any Ch1 - Ch4 (and any D0 - D15 on MSO models)  Recommended Probing - LIN: Single ended; CAN, FlexRay: Single ended or differential
<b>DPO4COMP</b>	Computer Serial Triggering and Analysis Module. Enables triggering on packet-level information on RS-232/422/485/UART buses as well as analytical tools such as digital views of the signal, bus views, packet decoding, search tools, and packet decode tables with time-stamp information.  Signal Inputs - Any Ch1 - Ch4 (and any D0 - D15 on MSO models)  Recommended Probing - RS-232/UART: Single ended; RS-422/485: Differential
<b>DPO4EMBD</b>	Embedded Serial Triggering and Analysis Module. Enables triggering on packet-level information on I <sup>2</sup> C and SPI buses as well as analytical tools such as digital views of the signal, bus views, packet decoding, search tools, and packet decode tables with time-stamp information. <sup>8</sup>  Signal Inputs - I <sup>2</sup> C: Any Ch1 - Ch4 (and any D0 - D15 on MSO models); SPI: Any Ch1 - Ch4 (and any D0 - D15 on MSO models)  Recommended Probing - Single ended

<sup>7</sup> Not available on DPO4102B or DPO4102B-L models.

<sup>8</sup> Only 2-wire SPI is supported on DPO4102B and DPO4102B-L models.

<b>DPO4ENET</b>	<p>Ethernet Serial Triggering and Analysis Module. Enables triggering on packet-level information on 10BASE-T and 100BASE-TX <sup>9</sup> buses as well as analytical tools such as digital views of the signal, bus views, packet decoding, search tools, and packet decode tables with time-stamp information.</p> <p>Signal Inputs - Any Ch1 - Ch4, Math, Ref1 - Ref4</p> <p>Recommended Probing - 10BASE-T: Single ended or differential; 100BASE-TX: Differential</p>
<b>DPO4USB</b>	<p>USB Serial Triggering and Analysis Module. Enables triggering on packet-level content for low-speed, full-speed, and high-speed USB serial buses. Also enables analytical tools such as digital views of the signal, bus views, packet decoding, search tools, and packet decode tables with time-stamp information for low-speed, full-speed, and high-speed USB serial buses. <sup>10</sup></p> <p>Signal Inputs - Low-speed and Full-speed: Any Ch1 - Ch4 (and any D0 - D15 on MSO models); Low-speed, Full-speed, and High-speed: Any Ch1 - Ch4, Math, Ref1 - Ref4</p> <p>Recommended Probing - Low-speed and Full-speed: Single ended or differential; High-speed: Differential</p>
<b>DPO4PWR</b>	<p>Power Analysis Application Module. Enables quick and accurate analysis of power quality, switching loss, harmonics, safe operating area (SOA), modulation, ripple, and slew rate (di/dt, dV/dt).</p>
<b>DPO4LMT</b>	<p>Limit and Mask Testing Application Module. Enables testing against limit templates generated from "golden" waveforms and mask testing using custom or standard telecommunications or computer masks. <sup>11</sup></p>
<b>DPO4VID</b>	<p>HDTV and Custom (nonstandard) Video Triggering and Video Picture Module.</p>

## Instrument options

### Power cord and plug options

<b>Opt. A0</b>	North America power plug (115 V, 60 Hz)
<b>Opt. A1</b>	Universal Euro power plug (220 V, 50 Hz)
<b>Opt. A2</b>	United Kingdom power plug (240 V, 50 Hz)
<b>Opt. A3</b>	Australia power plug (240 V, 50 Hz)
<b>Opt. A5</b>	Switzerland power plug (220 V, 50 Hz)
<b>Opt. A6</b>	Japan power plug (100 V, 50/60 Hz)
<b>Opt. A10</b>	China power plug (50 Hz)
<b>Opt. A11</b>	India power plug (50 Hz)
<b>Opt. A12</b>	Brazil power plug (60 Hz)
<b>Opt. A99</b>	No power cord

<sup>9</sup> ≥350 MHz bandwidth models are recommended for 100BASE-TX

<sup>10</sup> USB high-speed supported only on models with 1 GHz analog channel bandwidth.

<sup>11</sup> ≥350 MHz bandwidth models are recommended for mask testing on telecomm standards >55 Mb/s. 1 GHz bandwidth models are recommended for mask testing on high-speed (HS) USB.



**Language options**

<b>Opt. L0</b>	English manual
<b>Opt. L1</b>	French manual
<b>Opt. L2</b>	Italian manual
<b>Opt. L3</b>	German manual
<b>Opt. L4</b>	Spanish manual
<b>Opt. L5</b>	Japanese manual
<b>Opt. L6</b>	Portuguese manual
<b>Opt. L7</b>	Simplified Chinese manual
<b>Opt. L8</b>	Traditional Chinese manual
<b>Opt. L9</b>	Korean manual
<b>Opt. L10</b>	Russian manual
<b>Opt. L99</b>	No manual

Language options include translated front-panel overlay for the selected language(s).

**Service options**

<b>Opt. C3</b>	Calibration Service 3 Years
<b>Opt. C5</b>	Calibration Service 5 Years
<b>Opt. D1</b>	Calibration Data Report
<b>Opt. D3</b>	Calibration Data Report 3 Years (with Opt. C3)
<b>Opt. D5</b>	Calibration Data Report 5 Years (with Opt. C5)
<b>Opt. R5</b>	Repair Service 5 Years (including warranty)
<b>Opt. SILV600</b>	Standard warranty extended to 5 years

Probes and accessories are not covered by the oscilloscope warranty and service offerings. Refer to the datasheet of each probe and accessory model for its unique warranty and calibration terms.

## Recommended accessories

### Probes

Tektronix offers over 100 different probes to meet your application needs. For a comprehensive listing of available probes, please visit [www.tektronix.com/probes](http://www.tektronix.com/probes).

<b>TPP0500B</b>	500 MHz, 10X TekVPI® passive voltage probe with 3.9 pF input capacitance
<b>TPP0502</b>	500 MHz, 2X TekVPI® passive voltage probe with 12.7 pF input capacitance
<b>TPP0850</b>	2.5 kV, 800 MHz, 50X TekVPI® passive high-voltage probe
<b>TPP1000</b>	1 GHz, 10X TekVPI® passive voltage probe with 3.9 pF input capacitance
<b>TAP1500</b>	1.5 GHz TekVPI® active single-ended voltage probe
<b>TCP0030</b>	120 MHz TekVPI® 30 Ampere AC/DC current probe
<b>TCP0150</b>	20 MHz TekVPI® 150 Ampere AC/DC current probe
<b>TDP0500</b>	500 MHz TekVPI® differential voltage probe with $\pm 42$ V differential input voltage
<b>TDP1000</b>	1 GHz TekVPI® differential voltage probe with $\pm 42$ V differential input voltage
<b>TDP1500</b>	1.5 GHz TekVPI® differential voltage probe with $\pm 8.5$ V differential input voltage
<b>THDP0200</b>	$\pm 1.5$ kV, 200 MHz TekVPI® high-voltage differential probe
<b>THDP0100</b>	$\pm 6$ kV, 100 MHz TekVPI® high-voltage differential probe
<b>TMDP0200</b>	$\pm 750$ V, 200 MHz TekVPI® high-voltage differential probe
<b>P5100A</b>	2.5 kV, 500 MHz, 100X high-voltage passive probe
<b>P5200A</b>	1.3 kV, 50 MHz high-voltage differential probe

### Accessories

<b>077-0512-xx</b>	Service manual (English only)
<b>TPA-BNC</b>	TekVPI® to TekProbe™ BNC adapter
<b>TEK-DPG</b>	TekVPI Deskew pulse generator signal source
<b>067-1686-xx</b>	Power measurement deskew and calibration fixture
<b>TEK-USB-488</b>	GPIB-to-USB adapter
<b>ACD4000B</b>	Soft transit case
<b>HCTEK54</b>	Hard transit case (requires ACD4000B)
<b>RMD5000</b>	Rackmount kit



Tektronix is registered to ISO 9001 and ISO 14001 by SRI Quality System Registrar.



Product(s) complies with IEEE Standard 488.1-1987, RS-232-C, and with Tektronix Standard Codes and Formats.



**ASEAN / Australasia** (65) 6356 3900  
**Belgium** 00800 2255 4835\*  
**Central East Europe and the Baltics** +41 52 675 3777  
**Finland** +41 52 675 3777  
**Hong Kong** 400 820 5835  
**Japan** 81 (3) 6714 3010  
**Middle East, Asia, and North Africa** +41 52 675 3777  
**People's Republic of China** 400 820 5835  
**Republic of Korea** 001 800 8255 2835  
**Spain** 00800 2255 4835\*  
**Taiwan** 886 (2) 2722 9622

**Austria** 00800 2255 4835\*  
**Brazil** +55 (11) 3759 7627  
**Central Europe & Greece** +41 52 675 3777  
**France** 00800 2255 4835\*  
**India** 000 800 650 1835  
**Luxembourg** +41 52 675 3777  
**The Netherlands** 00800 2255 4835\*  
**Poland** +41 52 675 3777  
**Russia & CIS** +7 (495) 6647564  
**Sweden** 00800 2255 4835\*  
**United Kingdom & Ireland** 00800 2255 4835\*

**Balkans, Israel, South Africa and other ISE Countries** +41 52 675 3777  
**Canada** 1 800 833 9200  
**Denmark** +45 80 88 1401  
**Germany** 00800 2255 4835\*  
**Italy** 00800 2255 4835\*  
**Mexico, Central/South America & Caribbean** 52 (55) 56 04 50 90  
**Norway** 800 16098  
**Portugal** 80 08 12370  
**South Africa** +41 52 675 3777  
**Switzerland** 00800 2255 4835\*  
**USA** 1 800 833 9200

\* European toll-free number. If not accessible, call: +41 52 675 3777

Updated 10 April 2013

**For Further Information.** Tektronix maintains a comprehensive, constantly expanding collection of application notes, technical briefs and other resources to help engineers working on the cutting edge of technology. Please visit [www.tektronix.com](http://www.tektronix.com).

Copyright © Tektronix, Inc. All rights reserved. Tektronix products are covered by U.S. and foreign patents, issued and pending. Information in this publication supersedes that in all previously published material. Specification and price change privileges reserved. TEKTRONIX and TEK are registered trademarks of Tektronix, Inc. All other trade names referenced are the service marks, trademarks, or registered trademarks of their respective companies.



10 Dec 2014 3GW-20156-23

[www.tektronix.com](http://www.tektronix.com)

