



Sunsight™
Alignment Solutions



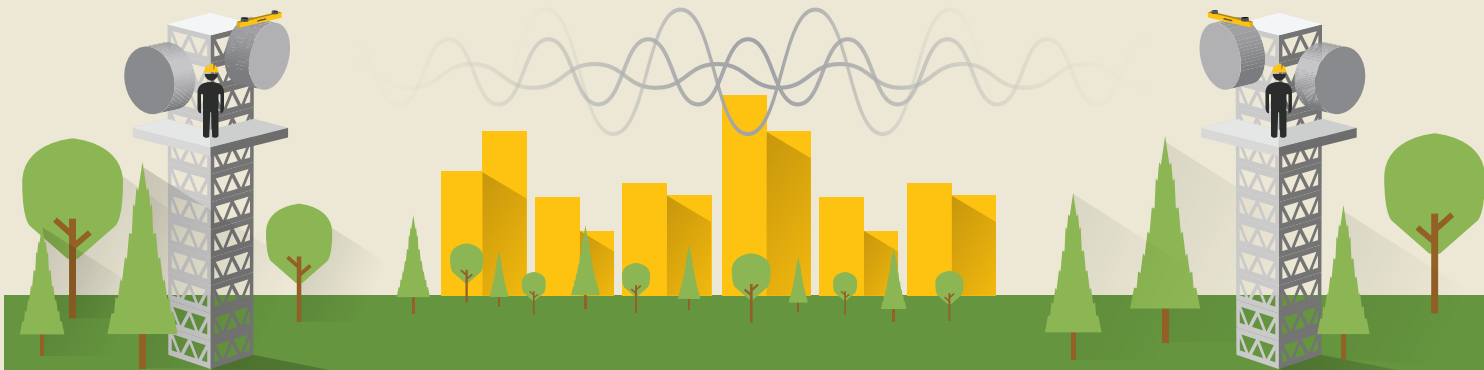
Tel: +1 (321) 244-9443

sales@sunsight.com

Sunsight MW15 Microwave Path Alignment Kit

Real Time End-to-End Path Alignment System (US Patent 9,781,233)

- ✓ Aligns backhaul antenna links in minutes regardless of distance or frequency
- ✓ Link can be aligned with or without radios installed or powered.
- ✓ Kit determines the required path alignment values automatically (target azimuth and elevation), eliminating potential data entry errors, incorrect initial path design or flawed data sheets.
- ✓ Each all-inclusive kit includes two alignment units to allow simultaneous alignment of both sides of the link in minutes
- ✓ Can also be used to align one end of link and the other end at a later time, eliminating the need for two crews to align a link
- ✓ Azimuth, tilt, roll, height, photos, and location (Lat/Long) captured in PDF report for customer and government communication agency records
- ✓ Each kit can also be used as two separate RF cellular antenna panel alignment tools with no additional hardware or software



The system automatically calculates exact alignment using known positional data in real-time and provides the user simple targets for aligning the link. No signal, power, or frequency is needed for Sunsight's innovative pathing process.

Technical Specifications

Accuracy:	AAT-15
Azimuth R99*	.45°
Azimuth RMS*	.15°
Tilt/Roll	.1°
Horizontal Position	30 cm (SBAS)
Vertical Position (MSL)	60 cm (SBAS)
Altitude w/ Laser Rangefinder	21 cm (AGL)
GPS Receiver	540 channel
Satellite Constellations	GPS and GLONASS

Battery:	
Type	LiFePO4
Life	9 hrs
Charge Time	1.5 hrs

Weight:	
Unit	4.5 lbs
Mount	4 lbs
Unit Dimensions	22.7"x3.8"x1.7" (57.6cmx9.6cmx4.3cm)

Environment and Connectivity:	
Op Temp	-40°C to 70°C (-40°F to 158°F)
Storage Temp	-40°C to 85°C (-40°F to 185°F)
Humidity	95%
Communications	802.11b,g,n
Output	PDF, CSV, HTML, Proprietary encrypted format
Memory	8 GB
Industry Certifications	CE and FCC

What's Included

Part #:	Description:
P/N 1015	Microwave Path Alignment Kit (Includes: 2 MW15 Units, 2 Hard Carrying Cases p/n 7015, 2 IP68 Sunsight Rugged Tablets p/n 4200, 2 Universal Microwave Mounts p/n 2200, 2 Side Mounts for RF panel alignment p/n 2110)
P/N MW15	Microwave Path Alignment Single Ended Unit (Includes: 1 MW15 Unit, 1 Hard Carrying Case p/n 7015, 1 IP68 Sunsight Rugged Tablet p/n 4200, 1 Universal Microwave Mount p/n 2200, 1 Side Mount for RF panel alignment p/n 2110)
P/N 2220 (Added Option)	Microwave Flat Panel Antenna Mount
P/N 3300 (Added Option)	Azimuth Scope Kit – for obtaining Azimuth readings from the ground
P/N 3301 (Added Option)	Laser Rangefinder (Laser Tape Drop) — for antenna AGL height accuracy up to 8 inches.

*RMS or root mean square is 1 sigma accuracy specification, R99 is 3 sigma (99.7%).

