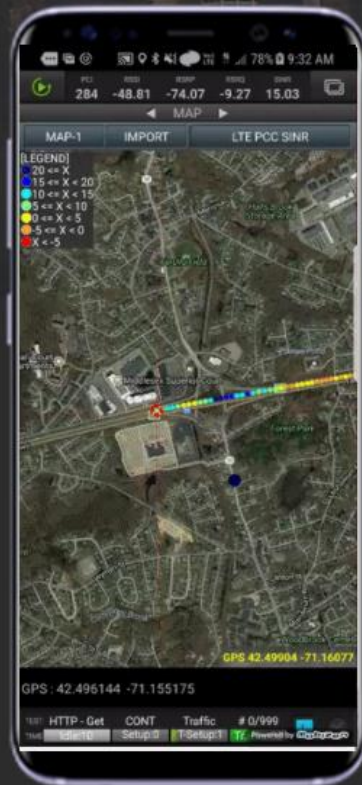


WIND[®] Pro

WIND Pro[®] is an award-winning engineering grade, handset based network testing and monitoring solution that visualizes your testing with our patented live KPI streaming technology.



Technologies

All latest cellular technologies and Wi-Fi



Speech Quality

Voice: POLQA, SQuad08 MOS



Modes

Outdoor – drive testing mode (GPS based)
Indoor – walk testing mode (iBwave support)



Advanced HetNet Features

Integration with iBwave Mobile Planner and Note
DAS zone overshoot detection
Macro Ingress detection
Antenna health check with intelligent threshold
Seamless indoor/outdoor transition



Advanced Locking

Network lock, Band lock, EARFCN lock, PCI lock



Test Scenarios

Voice: VoLTE, VoWiFi, CS voice call, audio MOS
Video: ViLTE, ViWiFi
Data: FTP, HTTP, Iperf2, Iperf3, Ookla[®] Speedtest
Messaging: SMS, MMS, E-mail
Streaming Video: YouTube, Amazon video



Data Processing

Real time: WIND[®] Console, WIND[®] LiveReport
On-device: WIND[®] EdgeReport
Post-processing: WIND[®] Console, Actix Analyzer



Multi-Device Connectivity

Tablet based Bluetooth/LTE connectivity to upto 16 handsets + 1 scanner



Scanner Support

PCTEL Seegul Hbflex[®], Seegul IBflex[®]