



Coverage Mapping with GPS

With Option 431 in Anritsu Handheld Spectrum Analyzers

Introduction

Spectrum analyzers provide accurate RF power measurements over a wide frequency range. With an antenna attached, RF power measurement becomes Received Signal Strength (RSSI). RSSI measurements can be combined with on-screen map displays to become a very versatile solution for mapping the coverage of RF transmitters.

Anritsu handheld analyzers with spectrum analysis capability can include Option 431, Coverage Mapping. This option supports the needs for both indoor and GPS coverage mapping.

In this application note, you will learn how to fully operate the instrument in accordance to the coverage mapping with GPS process. This type of mapping requires Option 31, GPS (with the exception of the BTS Master, where it is standard), and an external GPS antenna. The GPS receiver will automatically pinpoint your location relative to the map.

Anritsu easyMap Tools™

The easyMap Tools™ software provides maps in formats that Anritsu's handheld spectrum analyzers can use for coverage mapping. It helps users find and prepare geo-referenced maps for use by Anritsu handheld Spectrum Analyzers.

The easyMap allows users to quickly:

- Create geo-referenced maps
- Use either Google Maps or MapQuest (an Open Street Maps provider) to source maps
- Convert other maps or drawings to a form suitable for use on Anritsu handheld spectrum analyzers
- Insert GPS information into previously non-geo-referenced maps

The easyMap software sources map data from either Google Maps or MapQuest. Maps sourced from Google can be displayed as Terrain Maps, Road Maps, Hybrid Maps (a combination of satellite and road maps) and as Satellite view maps. However, Google Maps is not available in every country due to country specific restrictions. MapQuest-sourced maps are available as road maps, and come from the OpenStreetMaps movement. At this time, they are freely downloadable wherever internet access is available.

The easyMap software translates the map source into a format readable by Anritsu handheld spectrum analyzers. Two map formats are available; legacy .map files and the new Anritsu Zoomable Map (AZM) .azm files. AZM map files allow up to seven zoom levels and panning and zooming using the interference analyzer (option 25). The result is the ability to hunt interference over a large geographic area and at the same time show the detail needed to locate what you find. Pan and Zoom functionality is not yet available for coverage mapping.

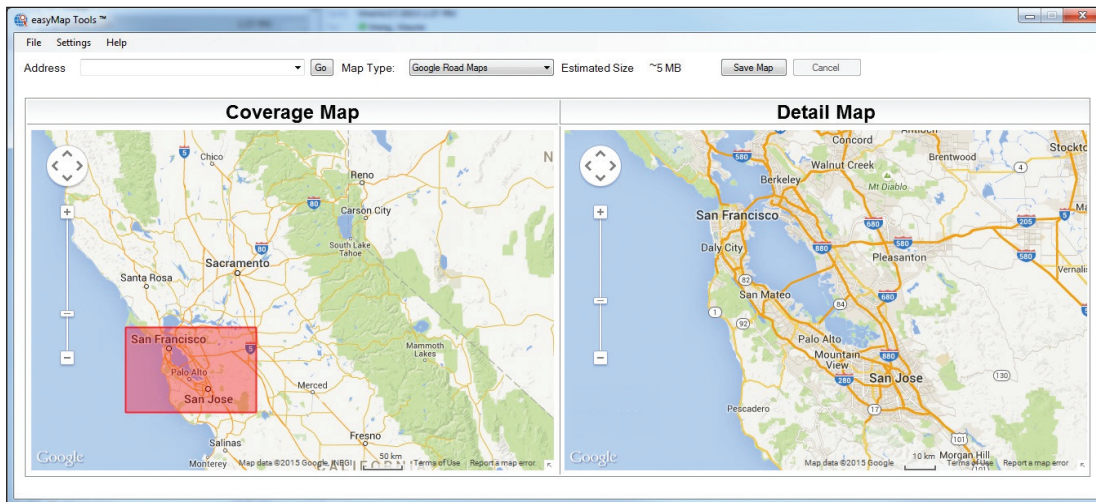


Figure 1: Create GPS geo-referenced maps with easyMap

Getting Started

Prior to conducting the coverage mapping survey, the analyzer itself must first be configured to properly measure the signals of interest. Knowledge of various parametrics such as anticipated signal strength and variation, potential presence of interfering signals, and noise sources should be used in determining analyzer settings. A brief summary of the main analyzer setups is shown below. However, the user may want to refer to the instrument user manual for more detailed guidance.

1. Bandwidth Parameters
 - a. Resolution Bandwidth (RBW): minimum bandwidth over which one can separate two signals for viewing. The RBW can be decreased for viewing closely spaced signals at the expense of acquisition time. A low RBW is also advantageous in limiting noise distortion and resolution of low-level signals.
 - b. Video Bandwidth (VBW): used for averaging and filtering noise. This is particularly useful in discerning low-level signals in the presence of noise.
2. Reference Level, Pre-Amplifier and Attenuator
 - a. Reference Level: Input signal levels are referenced to the top line of the graticule, known as the reference level. Depending on the amount of power anticipated in the signals to be measured, the reference level should be adjusted accordingly.
 - b. Pre-Amplifier and Attenuator: In order to present the proper signal level to the analyzer detection circuits, pre-amplification or attenuation can be adjusted on the signal input. The attenuator can be automatically adjusted as a function of the reference level. In general, signals below -40 dBm can use the pre-amplifier while signals over -30 dBm should be attenuated. For example, if the reference level setting is 20 dBm, attenuation should be set to 50 dB for a mixer input of -30 dBm.
3. Detector Type
 - a. Various detection circuits can be utilized. These include Peak, RMS, Negative and Sample. The type of detection is predicated on the user's measurement needs.
4. Filtering
 - a. Filtering should be used to measure signals in the presence of interferers. Filters can be added to the input of the analyzer to discriminate between wanted and unwanted signals, avoiding corruption of the measurement with adjacent high level signals.
5. Frequency
 - a. Select frequency to be measured.

To access the Coverage Mapping menu, either press the main menu icon **SPA Coverage Mapping**, or press the **Shift + Measure (4)** key, the **More**, and then the **Coverage Mapping** submenu key.

Note: For some instruments, this shortcut will not show up. Users can add it by pressing the **Shift + Measure (4)** key, the **More**, and then by holding the **Coverage Mapping** soft key for at least 3 seconds.

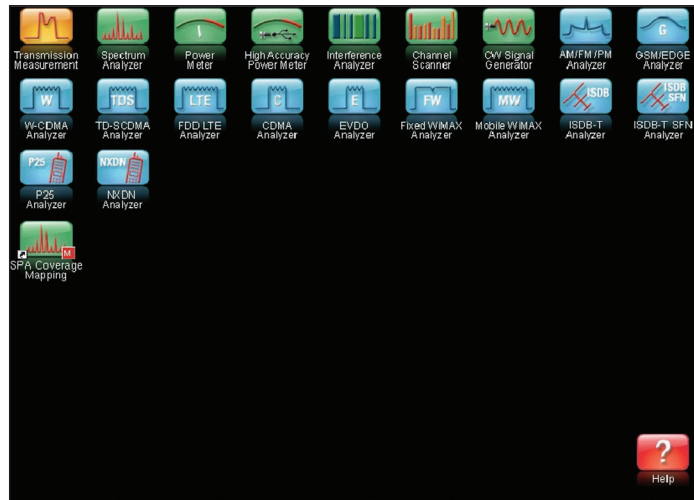


Figure 2: SPA Coverage Mapping

Setting Parameters

Before you begin Coverage Mapping, the parameters should be adjusted appropriately. In order to do so, first access the coverage mapping menu. Once there, select **Measurement Setup** and then to edit the measurement settings, touch the **RSSI** button. The threshold RSSI values provide the user with easy visibility of the power level.

- Better than Excellent
- Between Excellent and Very Good
- Between Very Good and Good
- Between Good and Poor
- Worse than Poor

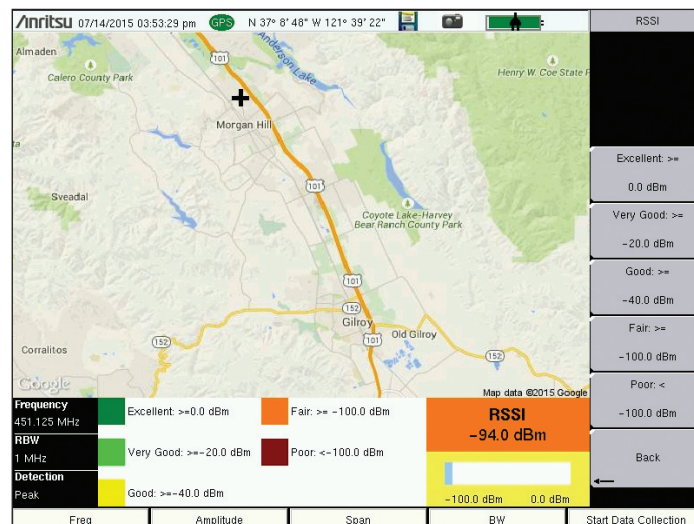


Figure 3: RSSI

The thresholds for the dBm values can be altered so the measurement indications on the map are colored appropriately for the expected signal levels.

Data Collection

Another setting that can be personalized is the way the data is recorded. In the coverage mapping menu, select **Point Distance/Time Setup**. Once there, you can set the way it records data by either time or distance, and the intervals of which it collects the data. If the collection setting is set to time, the instrument will plot a data point whenever the time set in Repeat Time is reached. If the distance option is set, the user receives a data point whenever the allocated distance is attained.

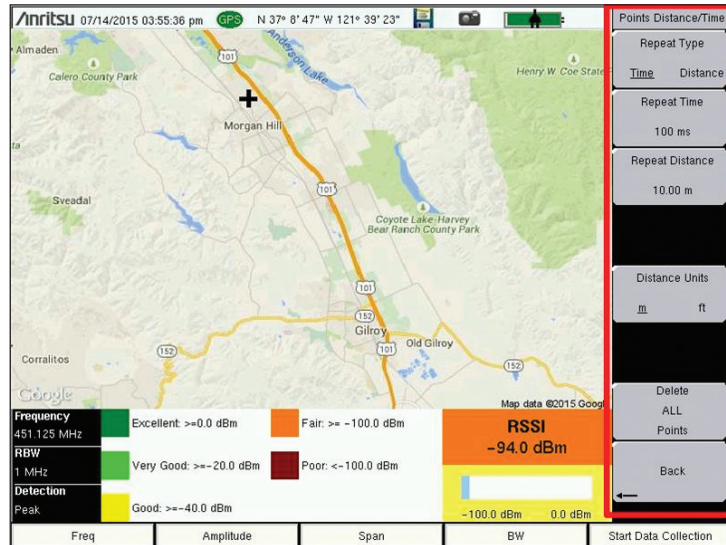


Figure 4: Data Collection Settings

Turning on GPS

In order to coverage map with GPS, Option 31 (GPS), is required. To turn the GPS on, press **Shift + System (8)**, and then the **GPS** soft key. In the GPS sub-menu, you can turn the GPS on or off, view GPS info, change the GPS Voltage, or reset the GPS.

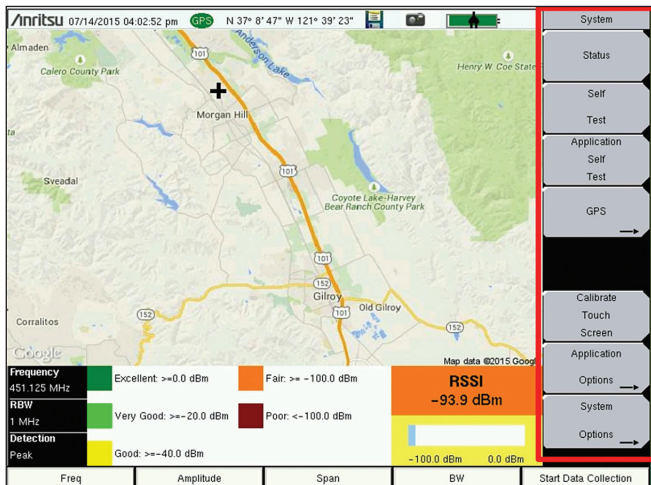


Figure 5: System Menu

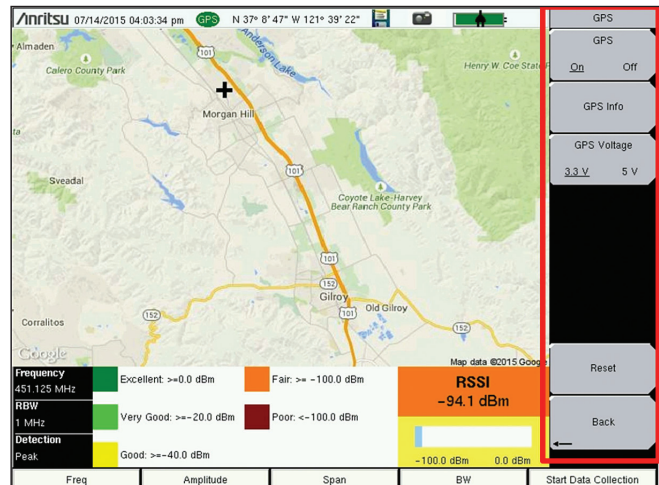


Figure 6: GPS Sub-Menu

The GPS sub-menu contains options essential for coverage mapping with GPS.

GPS Mapping

To begin Coverage Mapping, you first must open a MAP (.map) or AZM (.azm) file created using easyMap Tools. Insert the USB flash drive containing the MAP or AZM file into the USB port of the instrument. From there, at the Coverage Mapping menu, touch **Save/Recall Points/Map**. In the Mapping Save/Recall submenu, touch **Recall a Map**. Find the file from the USB you inserted, and press Enter on the keypad. The map should now appear on the screen. If not already done, the instrument will attempt to lock the GPS by tracking at least three satellites. Your location will then be set for you by the instrument relative to the map. Once that's done, touch the **Start Data Collection** key to get started. The instrument will automatically update your location and record points as you move. Once all the needed points have been plotted, press **Stop Data Collection** to finish.

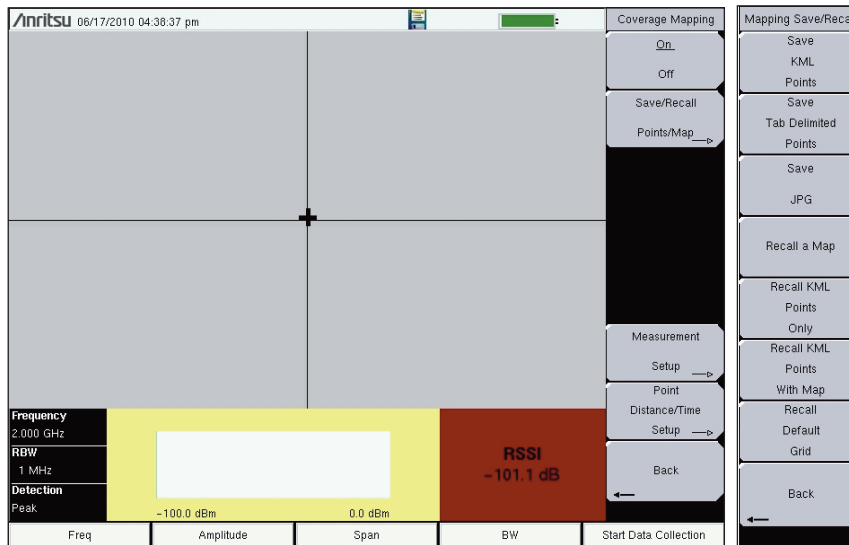


Figure 7: Recalling a Map

From the Coverage Mapping menu, select **Save/Recall Points/Map** and in the next menu, **Recall a Map**.

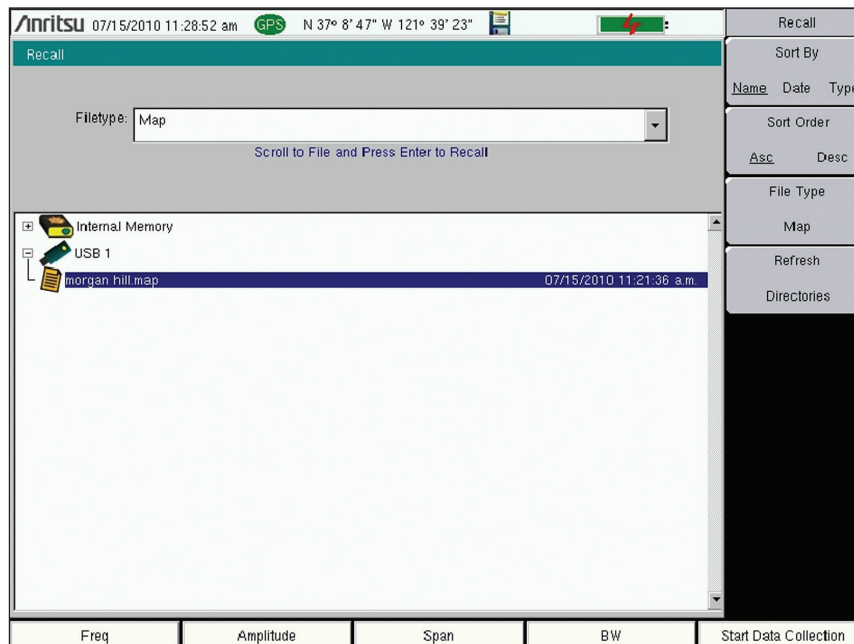


Figure 8: Selecting MAP file

Select the MAP (.map) or AZM (.azm) file from the USB and press **Enter** on the keypad.

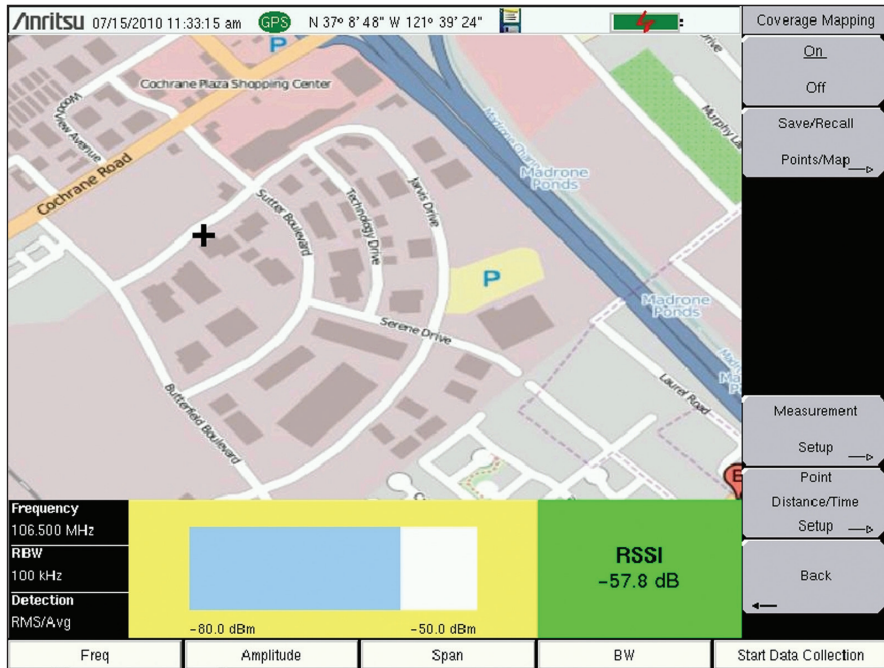


Figure 7: Recalling a Map

With the map on the screen, the instrument automatically pinpoints your location relative to the map.

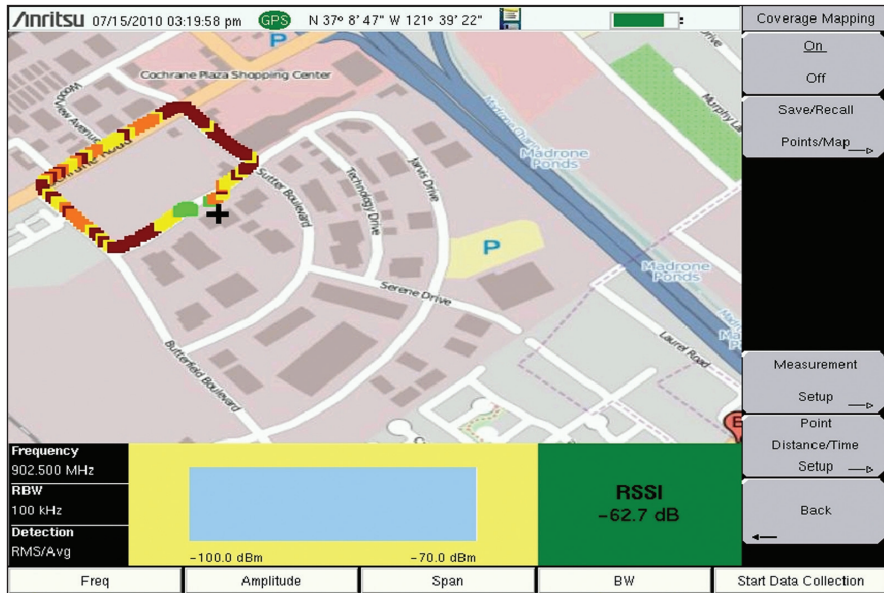


Figure 8: Selecting MAP file

When you press **Start Data Collection**, the instrument begins plotting the points. Once you are finished mapping, press **Stop Data Collection** to finish.

Saving the Data Collected

Once Data Collection is complete, the data points can be saved as a KML file, a tab delimited text file (.mtd), and/or a JPEG. When it is saved as a KML file, the data points can be later recalled by the instrument to be used once again, and when coverage mapped with the GPS option, the file can also be opened by Google Earth. For viewing the data collected however, it is recommended that the data be saved as a tab delimited file (.mtd). A tab delimited file can be opened with notepad or Excel for easy viewing and report generation.

To begin, access the Mapping Save/Recall submenu from the Coverage Mapping Menu. From there, touch **Save KML Points**, **Save Tab Delimited Points**, or **Save JPG**. A pop-up save prompt comes up, where the filename and file type can be changed. Once finished, press enter on the keypad or touch screen to save. The file can then be copied to the USB, transferred and opened.

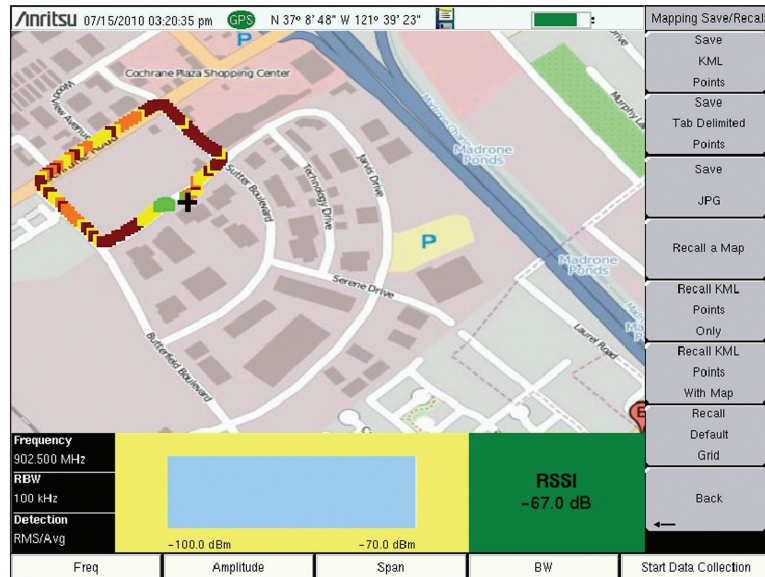


Figure 11: Saving Data Points

Access the Mapping Save/Recall submenu from the Coverage Mapping Menu.

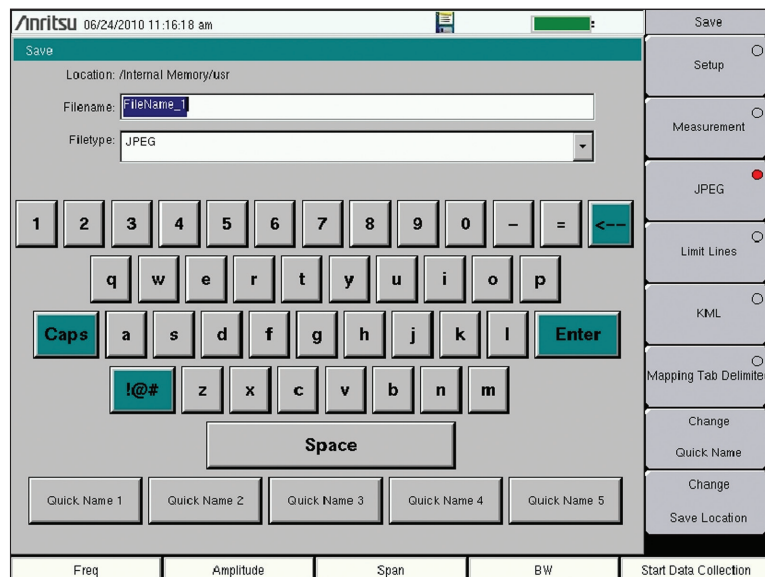


Figure 12: Saving the File

Change the needed fields, and press **Enter** in order to save the file.

Analyzing the Data

When saved as a tab delimited file (.mtd), the points recorded by the instrument can later be opened by a program such as Excel, to be viewed and analyzed.

Once opened, looking at the file from top to bottom, the first things you see are the rows 1-16. It has basic information, such as the file mode, model, serial number, and date the mapping was done. The actual data below is divided into columns. Columns A-F is only relevant when coverage mapping with GPS, but the columns G-AE pertain to both coverage mapping methods.

Column A- the point number

Column B- the status of the GPS

Column C- the longitude

Column D- the latitude

Column E- the UTC date

Column F- the UTC time

Column G- the system date

Column H- the system time

Column I- the mode the instrument was in

Column J- what type of data was collected

Column K- the values recorded by the instrument

Columns L-AE corresponds to the setup of the instrument. The way that the setup is organized, columns N, P, R, and T have the actual setting values, and the preceding columns indicate the user of what exactly the following values mean.

Column N- the frequency

Column P- the RBW setting

Column R- the VBW setting

Column T- the detection type

The columns U-AC shows the threshold values designated by the user earlier. You can look at the value placed in column K and refer to columns U-AC to determine the strength of the RF power measurement. At the very end, in the column AE, errors, if any, are listed. There are three possible values: ADC over range; saturation; and none.

The colors shown by the instrument provide easy viewing for the user when determining signal strength, but by viewing the file as a tab delimited file, the actual raw data can be seen.

Point#	GPS Statu	Longitude	Latitude(Y)	UTC Date	UTC Time	System D	System T	Measurement
Point# 1	GPS Lock	-121.657	37.14698	7/15/2010	22:12:55	7/15/2010	15:12:36	Spectrum, RSSI(dBm) -72.6 Setup: Frequency:902.500 M RBW 100 kHz VBW 10 Hz Detection Rh
Point# 2	GPS Lock	-121.656	37.14703	7/15/2010	22:13:01	7/15/2010	15:12:42	Spectrum, RSSI(dBm) -80 Setup: Frequency:902.500 M RBW 100 kHz VBW 10 Hz Detection Rh
Point# 3	GPS Lock	-121.656	37.1471	7/15/2010	22:13:03	7/15/2010	15:12:45	Spectrum, RSSI(dBm) -82 Setup: Frequency:902.500 M RBW 100 kHz VBW 10 Hz Detection Rh
Point# 4	GPS Lock	-121.656	37.14718	7/15/2010	22:13:06	7/15/2010	15:12:48	Spectrum, RSSI(dBm) -96.5 Setup: Frequency:902.500 M RBW 100 kHz VBW 10 Hz Detection Rh
Point# 5	GPS Lock	-121.656	37.14725	7/15/2010	22:13:10	7/15/2010	15:12:51	Spectrum, RSSI(dBm) -93.6 Setup: Frequency:902.500 M RBW 100 kHz VBW 10 Hz Detection Rh
Point# 6	GPS Lock	-121.656	37.14736	7/15/2010	22:13:14	7/15/2010	15:12:55	Spectrum, RSSI(dBm) -107.1 Setup: Frequency:902.500 M RBW 100 kHz VBW 10 Hz Detection Rh
Point# 7	GPS Lock	-121.656	37.14746	7/15/2010	22:13:17	7/15/2010	15:12:59	Spectrum, RSSI(dBm) -85.5 Setup: Frequency:902.500 M RBW 100 kHz VBW 10 Hz Detection Rh
Point# 8	GPS Lock	-121.656	37.14752	7/15/2010	22:13:19	7/15/2010	15:13:01	Spectrum, RSSI(dBm) -91.2 Setup: Frequency:902.500 M RBW 100 kHz VBW 10 Hz Detection Rh
Point# 9	GPS Lock	-121.656	37.1476	7/15/2010	22:13:22	7/15/2010	15:13:03	Spectrum, RSSI(dBm) -93.4 Setup: Frequency:902.500 M RBW 100 kHz VBW 10 Hz Detection Rh
Point# 10	GPS Lock	-121.656	37.14769	7/15/2010	22:13:23	7/15/2010	15:13:05	Spectrum, RSSI(dBm) -96.6 Setup: Frequency:902.500 M RBW 100 kHz VBW 10 Hz Detection Rh
Point# 11	GPS Lock	-121.656	37.14778	7/15/2010	22:13:25	7/15/2010	15:13:07	Spectrum, RSSI(dBm) -100.5 Setup: Frequency:902.500 M RBW 100 kHz VBW 10 Hz Detection Rh
Point# 12	GPS Lock	-121.656	37.14787	7/15/2010	22:13:28	7/15/2010	15:13:09	Spectrum, RSSI(dBm) -99.9 Setup: Frequency:902.500 M RBW 100 kHz VBW 10 Hz Detection Rh
Point# 13	GPS Lock	-121.656	37.14796	7/15/2010	22:13:30	7/15/2010	15:13:11	Spectrum, RSSI(dBm) -106.4 Setup: Frequency:902.500 M RBW 100 kHz VBW 10 Hz Detection Rh
Point# 14	GPS Lock	-121.656	37.14804	7/15/2010	22:13:32	7/15/2010	15:13:13	Spectrum, RSSI(dBm) -109.7 Setup: Frequency:902.500 M RBW 100 kHz VBW 10 Hz Detection Rh
Point# 15	GPS Lock	-121.655	37.14812	7/15/2010	22:13:37	7/15/2010	15:13:18	Spectrum, RSSI(dBm) -101 Setup: Frequency:902.500 M RBW 100 kHz VBW 10 Hz Detection Rh
Point# 16	GPS Lock	-121.655	37.1482	7/15/2010	22:13:39	7/15/2010	15:13:20	Spectrum, RSSI(dBm) -106.1 Setup: Frequency:902.500 M RBW 100 kHz VBW 10 Hz Detection Rh
Point# 17	GPS Lock	-121.655	37.14832	7/15/2010	22:13:41	7/15/2010	15:13:22	Spectrum, RSSI(dBm) -98.4 Setup: Frequency:902.500 M RBW 100 kHz VBW 10 Hz Detection Rh
Point# 18	GPS Lock	-121.655	37.14843	7/15/2010	22:13:43	7/15/2010	15:13:24	Spectrum, RSSI(dBm) -108.9 Setup: Frequency:902.500 M RBW 100 kHz VBW 10 Hz Detection Rh
Point# 19	GPS Lock	-121.655	37.14848	7/15/2010	22:13:44	7/15/2010	15:13:25	Spectrum, RSSI(dBm) -110.1 Setup: Frequency:902.500 M RBW 100 kHz VBW 10 Hz Detection Rh
Point# 20	GPS Lock	-121.656	37.14854	7/15/2010	22:13:45	7/15/2010	15:13:26	Spectrum, RSSI(dBm) -110.9 Setup: Frequency:902.500 M RBW 100 kHz VBW 10 Hz Detection Rh
Point# 21	GPS Lock	-121.656	37.14861	7/15/2010	22:13:46	7/15/2010	15:13:27	Spectrum, RSSI(dBm) -108.9 Setup: Frequency:902.500 M RBW 100 kHz VBW 10 Hz Detection Rh
Point# 22	GPS Lock	-121.656	37.14869	7/15/2010	22:13:46	7/15/2010	15:13:28	Spectrum, RSSI(dBm) -110.2 Setup: Frequency:902.500 M RBW 100 kHz VBW 10 Hz Detection Rh
Point# 23	GPS Lock	-121.656	37.14876	7/15/2010	22:13:47	7/15/2010	15:13:29	Spectrum, RSSI(dBm) -108.6 Setup: Frequency:902.500 M RBW 100 kHz VBW 10 Hz Detection Rh
Point# 24	GPS Lock	-121.656	37.14883	7/15/2010	22:13:49	7/15/2010	15:13:30	Spectrum, RSSI(dBm) -108.8 Setup: Frequency:902.500 M RBW 100 kHz VBW 10 Hz Detection Rh
Point# 25	GPS Lock	-121.656	37.14892	7/15/2010	22:13:50	7/15/2010	15:13:31	Spectrum, RSSI(dBm) -106.1 Setup: Frequency:902.500 M RBW 100 kHz VBW 10 Hz Detection Rh

Figure 13: Viewing the Data

The data can then be opened by other software programs for analysis and report generation.

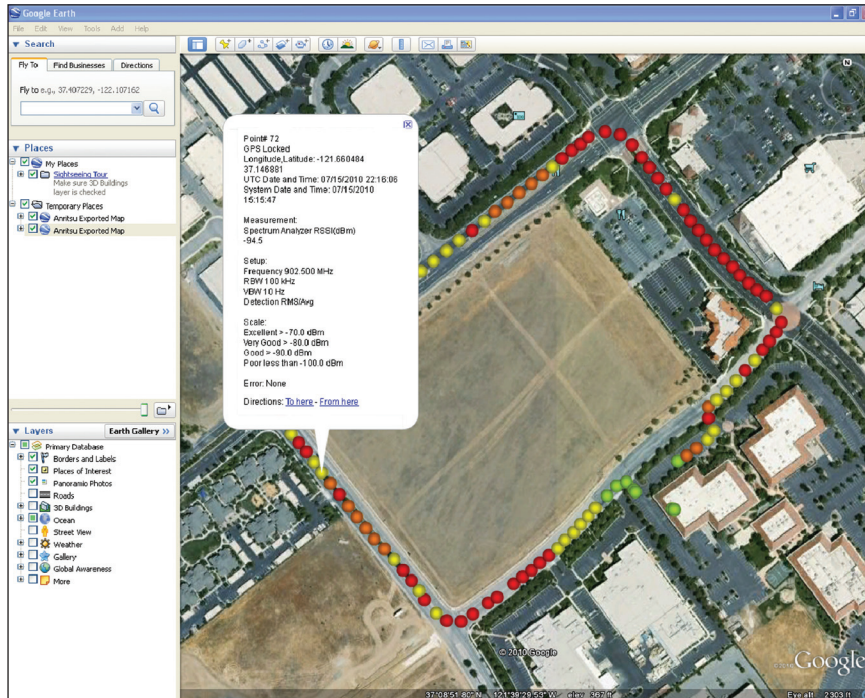


Figure 14: Google Earth

With Google Earth, you can open a saved KML file transferred from the device to your computer. Simply double-click the KML file and Google Earth will run and show the points in a Digital Orthophoto Quadrangle (DOQ) format. You can click on the points to see both the colors for easy analyzing, as well as the more specific values given by a tab delimited file.

To install Google Earth, go to the web site: <http://earth.google.com/>. Download the program and then install it to your computer. Additional help may be found through the Help pull-down menu.

Conclusion

Most wireless communications systems are designed to provide coverage over a predetermined area and not interfere with distant systems using the same frequencies. Coverage estimation software must make assumptions about loss due to terrain, buildings and other factors. If the assumptions are not accurate, the actual coverage of a system will differ from the design. Mapping the coverage with a precision receiver provides the ultimate proof and can help separate interference issues from signal strength problems.

The Anritsu E-Series Spectrum Master™, Cell Master™, LMR Master™, and Site Master™ models are powerful battery operated instruments that can support a wide range of signal types. With the addition of Option 431, and the power of GPS (Option 31), Coverage Mapping users can easily make signal strength measurements and create detailed maps and reports of system coverage.



• **United States**

Anritsu Company

1155 East Collins Boulevard, Suite 100,
Richardson, TX, 75081 U.S.A.
Toll Free: 1-800-267-4878
Phone: +1-972-644-1777
Fax: +1-972-671-1877

• **Canada**

Anritsu Electronics Ltd.

700 Silver Seven Road, Suite 120,
Kanata, Ontario K2V 1C3, Canada
Phone: +1-613-591-2003
Fax: +1-613-591-1006

• **Brazil**

Anritsu Eletrônica Ltda.

Praça Amadeu Amaral, 27 - 1 Andar
01327-010 - Bela Vista - São Paulo - SP - Brazil
Phone: +55-11-3283-2511
Fax: +55-11-3288-6940

• **Mexico**

Anritsu Company, S.A. de C.V.

Av. Ejército Nacional No. 579 Piso 9, Col. Granada
11520 México, D.F., México
Phone: +52-55-1101-2370
Fax: +52-55-5254-3147

• **United Kingdom**

Anritsu EMEA Ltd.

200 Capability Green, Luton, Bedfordshire LU1 3LU, U.K.
Phone: +44-1582-433280
Fax: +44-1582-731303

• **France**

Anritsu S.A.

12 avenue du Québec, Batiment Iris 1-Silic 612,
91140 Villebon-sur-Yvette, France
Phone: +33-1-60-92-15-50
Fax: +33-1-64-46-10-65

• **Germany**

Anritsu GmbH

Nemetschek Haus, Konrad-Zuse-Platz 1
81829 München, Germany
Phone: +49-89-442308-0
Fax: +49-89-442308-55

• **Italy**

Anritsu S.r.l.

Via Elio Vittorini 129, 00144 Roma Italy
Phone: +39-06-509-9711
Fax: +39-06-502-2425

• **Sweden**

Anritsu AB

Kistagången 20B, 164 40 KISTA, Sweden
Phone: +46-8-534-707-00
Fax: +46-8-534-707-30

• **Finland**

Anritsu AB

Teknobulevardi 3-5, FI-01530 VANTAA, Finland
Phone: +358-20-741-8100
Fax: +358-20-741-8111

• **Denmark**

Anritsu A/S

Kay Fiskers Plads 9, 2300 Copenhagen S, Denmark
Phone: +45-7211-2200
Fax: +45-7211-2210

• **Russia**

Anritsu EMEA Ltd.

Representation Office in Russia
Tverskaya str. 16/2, bld. 1, 7th floor.
Moscow, 125009, Russia
Phone: +7-495-363-1694
Fax: +7-495-935-8962

• **Spain**

Anritsu EMEA Ltd.

Representation Office in Spain

Edificio Cuzco IV, Po. de la Castellana, 141, Pta. 8
28046, Madrid, Spain
Phone: +34-915-726-761
Fax: +34-915-726-621

• **United Arab Emirates**

Anritsu EMEA Ltd.

Dubai Liaison Office

P O Box 500413 - Dubai Internet City
Al Thuraya Building, Tower 1, Suite 701, 7th floor
Dubai, United Arab Emirates
Phone: +971-4-3670352
Fax: +971-4-3688460

• **India**

Anritsu India Pvt Ltd.

2nd & 3rd Floor, #837/1, Binnamangla 1st Stage,
Indiranagar, 100ft Road, Bangalore - 560038, India
Phone: +91-80-4058-1300
Fax: +91-80-4058-1301

• **Singapore**

Anritsu Pte. Ltd.

11 Chang Charn Road, #04-01, Shriro House
Singapore 159640
Phone: +65-6282-2400
Fax: +65-6282-2533

• **P. R. China (Shanghai)**

Anritsu (China) Co., Ltd.

27th Floor, Tower A,
New Caohejing International Business Center
No. 391 Gui Ping Road Shanghai, Xu Hui Di District,
Shanghai 200233, P.R. China
Phone: +86-21-6237-0898
Fax: +86-21-6237-0899

• **P. R. China (Hong Kong)**

Anritsu Company Ltd.

Unit 1006-7, 10/F., Greenfield Tower, Concordia Plaza,
No. 1 Science Museum Road, Tsim Sha Tsui East,
Kowloon, Hong Kong, P. R. China
Phone: +852-2301-4980
Fax: +852-2301-3545

• **Japan**

Anritsu Corporation

8-5, Tamura-cho, Atsugi-shi,
Kanagawa, 243-0016 Japan
Phone: +81-46-296-1221
Fax: +81-46-296-1238

• **Korea**

Anritsu Corporation, Ltd.

5FL, 235 Pangyoeyeok-ro, Bundang-gu, Seongnam-si,
Gyeonggi-do, 463-400 Korea
Phone: +82-31-696-7750
Fax: +82-31-696-7751

• **Australia**

Anritsu Pty Ltd.

Unit 21/270 Ferntree Gully Road,
Notting Hill, Victoria 3168, Australia
Phone: +61-3-9558-8177
Fax: +61-3-9558-8255

• **Taiwan**

Anritsu Company Inc.

7F, No. 316, Sec. 1, Neihu Rd., Taipei 114, Taiwan
Phone: +886-2-8751-1816
Fax: +886-2-8751-1817

